

REINTAIR

Plug & play purifiers to turn any indoor space
into a virus-free environment



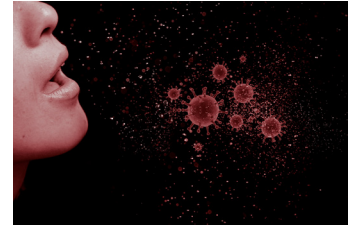


REINTAIR

Plug & play purifiers to turn any indoor space into a virus-free environment

MAIN FUNCTION

- REINTAIR by Casals air purifiers are plug & play sets (no installation required) to convert any interior space into an environment free of contaminating particles and thus leave a much healthier air.
- It is designed to reduce the viral load of the rooms given the constant air renewals that it carries out.

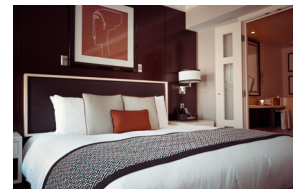


HEPA
H14

1. Reduction of dust particles, odors and contaminating microorganisms. Thus creating a healthier environment. Ideal for people with **allergies and asthma**.
2. Aside from a healthier work environment, our air purifiers **reduce the need for cleaning** by removing a large portion of the dust that is generated daily.
3. Double filtration stage with two **ABSOLUTE HEPA H14** filter packages and a Molecular filter that in a matter of hours will reduce a large number of particles in the air such as microorganisms, bacteria, viruses, molecules, etc.
4. Equipped with **high efficiency and silent fans** to guarantee low energy consumption.

APPLICATIONS

- Designed for all kind of indoor spaces such as:
 - health sector
 - offices
 - hotels
 - homes
 - universities
 - colleges
- In short, for any public space where high-quality air purification is required since REINTAIR purifiers are equipped with **high-efficiency HEPA H14 filters**.
- Designed to be **easily moved** in indoor spaces, which makes them the best solution for:
 - Ventilation of workstations.
 - The health sector (waiting rooms, corridors, rooms, field hospitals, common areas, clinics, pharmacies, etc.).
 - The tertiary and industrial sector (offices, hotels, universities, schools, public institutions, warehouses, living rooms in restaurants).
 - The residential sector (single-family flats and houses).





MANUFACTURING FEATURES

- **High efficiency** purification unit built in **soundproof** steel structure, galvanized for corrosion resistance.
- Available in two motor versions (AC & EC) in two different sizes:
 1. **REINTAIR S AC/EC** up to 300m³/h for indoor spaces (2,5m high) of up to 45m².
 2. **REINTAIR L AC/EC** up to 600m³/h for indoor spaces (2,5m high) of up to 90m².

CHASIS:

- **Soundproof** 30mm extruded aluminum profile, nylon corners and pre lacquered steel sandwich panels, RAL 9006, class M0, with 25mm internal rockwool insulation class A1 (non combustible) and 90Kg/m³ density. Panels come with quick release **fastening system** for easy assembly and disassembly whenever required, whether for cleaning, maintenance or panel repositioning.
- **Filters** are located in the perforated side panels, with **handles and fastening system**. This ease of access optimizes maintenance and filter replacement procedures. Filter replacement and manipulation of the REINTAIR is recommended with the appropriate PPE's.
- REINTAIR purifiers are equipped with **4 wheels** with brakes on the base for ease of mobility throughout the interior spaces.

FAN:

- Equipped with **high efficiency single inlet - backward impeller** with **self-cleaning** system, made of polyamide, statically and dynamically balanced at the factory.

FILTERS:

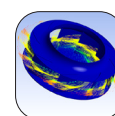
- **Dual filtering stage** at each end of the REINTAIR comprised of 2x Iso Coarse 65% (G4) + 2x HEPA H14.
- 4 filters per purification unit.
- The Iso Coarse 65% pre-filters increase the life of the absolute filters HEPA H14.

MOTORS:

- 2 versions:
 1. **Low consumption EC** (electronically commutated) Technology exterior rotor motor. IP-44 protection and class B insulation. Standard voltage 230V 50Hz/60Hz.
 2. **Asynchronous exterior rotor motor**, thermal protection and permanent lubrication ball bearings included. IP-44 protection and class B insulation according to DIN 40.050 H1. Standard voltage 230V-50Hz/60Hz.

CONTROL PANEL:

- All REINTAIR air purifiers are equipped with a master control panel located on one side of the structure.
- This control panel allows for control of the following parameters:
 1. On/Off of the air Purifier.
 2. Automatic function – Autonomous.
 3. Flow adjustment, 0 being the lowest and 10 the highest.
 4. Schedule control for night mode optimization and thus favouring low energy consumption when the interior spaces are empty.
 5. Clogged filter alarm and maintenance indication.

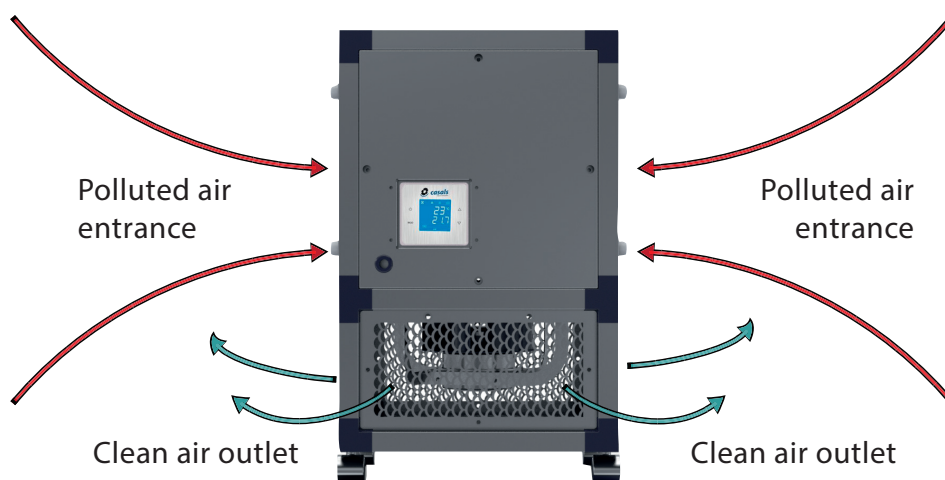
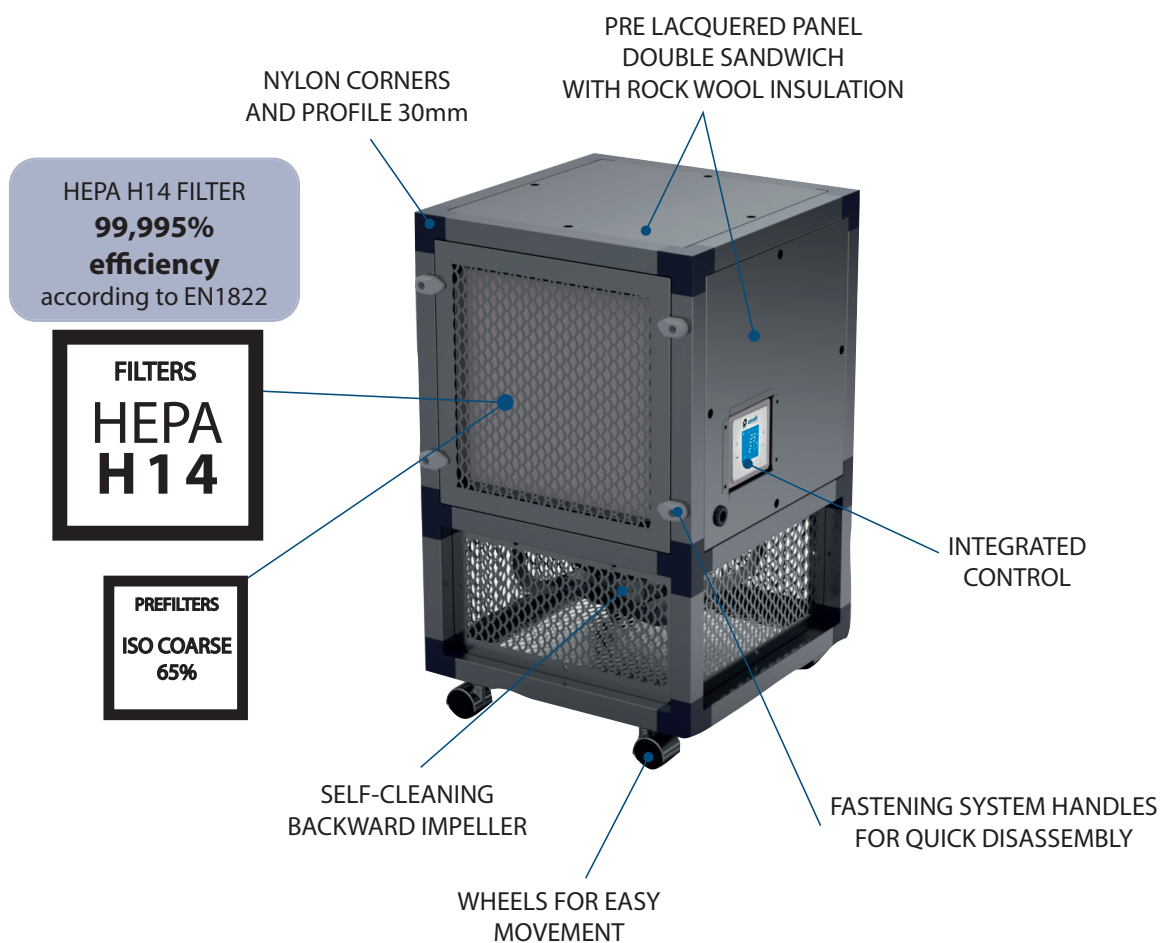


UNDER REQUEST

- Differential pressure switch (**INT PS**) installation onto the REINTAIR unit for optimization of filter clogging state.



OPERATING SCHEME

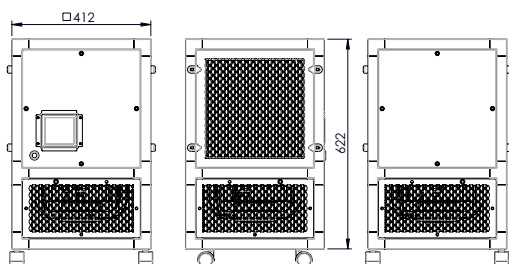




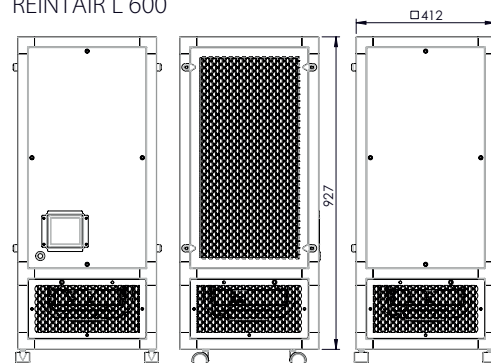
EXTERNAL DIMENSIONS

	REINTAIR S	REINTAIR L
Height with wheels (mm)	670	975
Width (mm)	412	412
Length (mm)	412	412
Total Weight (Kg)	30	50

REINTAIR S 300



REINTAIR L 600



TECHNICAL DATA OF REINTAIR

	REINTAIR S AC	REINTAIR L AC	REINTAIR S EC	REINTAIR L EC
Phase	Single phase	Single phase	Single phase	Single phase
Nominal voltage (V)	230	230	230	230
Nominal voltage range (V)	220-240	220-240	220-240	220-240
Frequency (Hz)	50/60	50/60	50/60	50/60
Rated R.P.M	2480	2530	3980	3600
Rated I (A) 230V	0,42	0,82	1,08	1,28
Rated Power (W)	100	190	135	166
Max. Airflow (m3/h)	300	600	300	600
Sound dB(A) (at 6m)	38	42,5	41	44
Surfaces up to (m2)	45	90	45	90
Min. ambient temperature (°C)	-25	-25	-25	-25
Max. ambient temperature (°C)	55	55	50	50

Note: The REINTAIR purifiers are 100% speed adjustables.

TECHNICAL DATA OF FILTERS

	EFFICIENCY	DIMENSIONS WxHxD (mm)	MEDIUM AREA (m ²)	AIRFLOW/ PRESSURE DROP at 0,45 m/s (m ³ /h / Pa)*	Weight (Kg)
HEPA FILTER REINTAIR S	H14	305 x 305 x 66	2	151/175	1,9
HEPA FILTER REINTAIR L	H14	305 x 610 x 66	4,1	301/175	3,2
ISO COARSE 65% (G4) FILTER REINTAIR S	ISO COARSE 65%	287 x 287 x 24	0,2	700/70	0,2
ISO COARSE 65% (G4) FILTER REINTAIR L	ISO COARSE 65%	287 x 592 x 24	0,3	1500/70	0,2