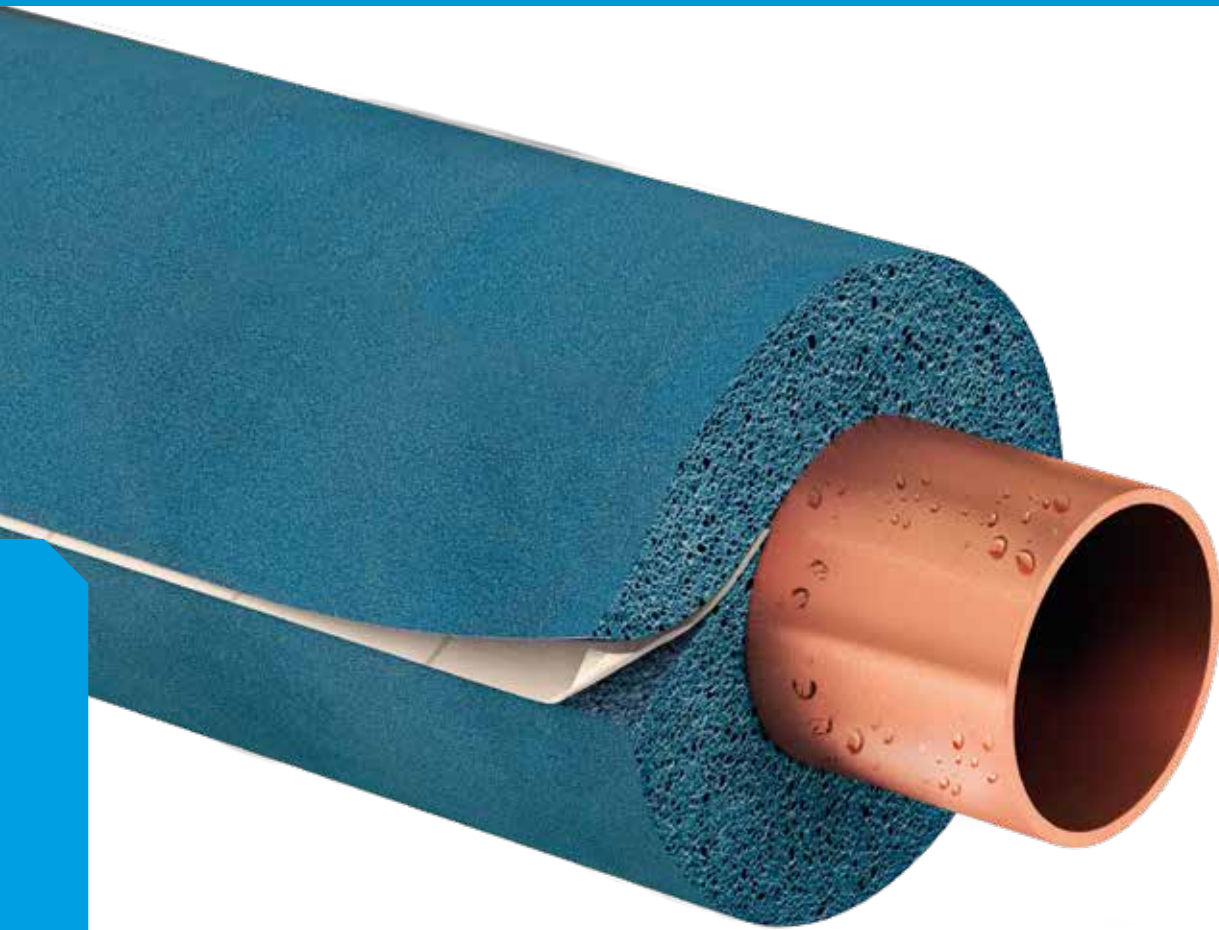


# ArmaFlex Ultima<sup>®</sup>

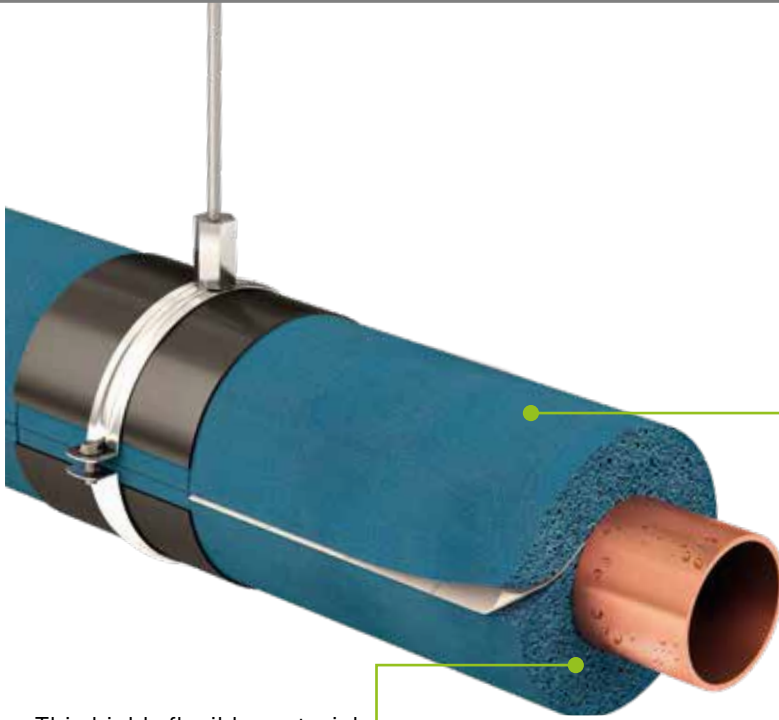


## THE FLEXIBLE INSULATION WITH MINIMUM SMOKE EMISSIONS

- Environmental product declaration available (EPD)
- Manufactured with patented Armaprene<sup>®</sup> technology
- Low smoke emission for greater safety
- Complete installation with adhesives, supports and accessories
- Adapted for sustainable building (BREEAM)



# PROPERTIES



With the fire classification B<sub>L</sub>-s1, d0, ArmaFlex Ultima has established a new standard in flexible technical insulation

This highly flexible material with closed cell structure emits very low smoke density, making an important contribution to fire safety in buildings

European patent  
No. 2 261 305

**PATENTED**

ARMAPRENE TECHNOLOGY



## PROTECTION OF PEOPLE



## LOW SMOKE EMISSIONS



Euroclasses: The European classification system & fire reaction tests

# COMPLETE SYSTEM

For any professional insulation challenge

- ArmaFlex Ultima
- ArmaFix Ultima
- ArmaFlex Ultima RS850, ArmaFlex Ultima 700, ArmaFlex SF Cleaner.



## RANGE

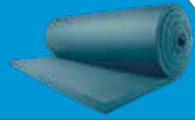
## TUBE

Tubes, Self-adhesive tubes (self-seal)



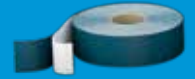
## SHEET

Continuous sheet (rolls), Self-adhesive continuous sheet (rolls)



## TAPE

Self-adhesive



## RECOMMENDED PRODUCTS

For a complete installation



ArmaFix Ultima pipe supports



ArmaFlex Ultima 700 adhesive



ArmaFlex Ultima RS850 adhesive



ArmaFlex SF Cleaner

# TECHNICAL DATA

Closed cell flexible elastomeric foam, based on a patented synthetic rubber with unique fire reaction properties and minimal smoke emission. Recommended for application in air conditioning and refrigeration installations, as well as for building equipment, industrial installations and high risk areas.

<b>Material type</b>	Elastomeric foam based rubber; manufactured with Armaprence® Patented technology US patent No. 8.163.811, EU patent No. 2 261 305. Factory made flexible elastomeric foam (FEF) according to EN 14304
<b>Colour</b>	Blue
<b>Material information</b>	Self-adhesive coating: pressure-sensitive adhesive coating on modified acrylate basis with mesh structure. Covered with polyethylene foil. The protective backing present on the self-adhesive tubes and sheets may contain traces of silicon.
<b>Applications</b>	Insulation/protection to control condensation, reduce energy loss and protect against frost on pipes, air ducts, vessels (incl. elbows, fittings, flanges etc) Suitable for hot and cold water services, chilled water lines, heating systems, air conditioning ductwork and refrigerated pipework. Armaflex tape should be used to fully secure self-adhesive tube seams.
<b>Special features</b>	Low smoke performance
<b>Safety &amp; environment</b>	Type III Environmental product Declaration (EPD): Declaration # EPD-ARM-20150109-IBB1-DE, Insitut Bauen und Umwelt e.V. (IBU).
<b>Assembly</b>	Light-weight and flexible. Closed cell structure means no additional vapour barrier is required.
<b>Remarks</b>	Declaration Of Performance (DOP) is available in accordance with Article 7(3) of regulation (EU) No 305/2011 <a href="http://www.armacell.com/dop">www.armacell.com/dop</a>

Property	Value/Assessment	Test	Standards & Remarks
<b>Temperature Range</b>			
Max service temperature	+110°C (+85°C if sheet or tape is glued to a flat object)	EU 5846	Tested acc to EN 14706, EN 14707 & EN 14304
Min service temperature	-50°C (For temperatures below -50 °C please contact our technical department)		
<b>Thermal Conductivity</b>			
Tubes, Sheet & tape	$\lambda$ 0°C ≤ 0.040 W/(m·K) $[40+0.1 \cdot \rho_m + 0.0009 \cdot \rho_m^2]/1000$	EU 5846	Declared acc. to EN ISO 13787 Tested acc. to EN12667 & EN ISO 8497
<b>Water Vapour Diffusion Resistance</b>			
Tubes & Sheet	$\mu \geq 7000$	EU 5846	Tested acc. to EN 12086 & EN 13469
<b>Fire Performance</b>			
Tubes, self-adhesive tubes, tape	B <sub>L</sub> -s1.d0	EU 5846	Classified acc. to EN 13501-1 Tested acc. to EN 13823 & EN ISO 11925-2
Sheets, self-adhesive sheet	B-s2,d0		
Ship building	Bureau Veritas, Det Norske Veritas, Lloyds Register	D 5243 EU 5954 D 5245	Classified acc. to MED 96/98/EC MODULE D Tested acc. to IMO Resolution
Fire resistance of structural element	EI 30 - EI 120	EU 5846 EU 5584	Classified acc. to EN 13501-2 Tested acc. to EN 1366-3
Fire Class	FM Approved up to 25mm	D 5192	Tested acc.to UBC26-3 Class No. 4924
Practical fire behaviour	Self-extinguishing, does not drip & does not spread flames, low smoke density		
<b>Other technical features</b>			
Dimensions & tolerances	In accordance with EN 14304, table 1	EU 5846	Tested acc. to EN 822, EN 823 & EN 13467
UV resistance	For protection against UV radiation use cladding systems such as Okabell for outdoor application Okatherm for indoor applications.		
Storage & shelf life	Self-adhesive tapes Self-adhesive sheets Self-adhesive tubes	1 year. Can be stored in dry clean rooms at normal relative humidity (50% to 70%) and ambient temperature (0°C - 35°C)	
Antimicrobial behaviour	No fungal growth observed		

**TUBE**Width - 2m, Colour - Blue, Fire Performance - B<sub>L</sub>-s1.d0

Pipe max. Outside - Ø (mm)	9mm INSULATION THICKNESS			13mm INSULATION THICKNESS		
	Code	m/carton		Code	m/carton	
6				UD-13X006	164	
10				UD-13X010	140	
12	UD-09X012	192		UD-13X012	130	
15	UD-09X015	180		UD-13X015	112	
18	UD-09X018	150		UD-13X018	98	
22	UD-09X022	124		UD-13X022	88	
28	UD-09X028	96		UD-13X028	64	
35	UD-09X035	70		UD-13X035	56	
42	UD-09X042	56		UD-13X042	48	
48	UD-09X048	52		UD-13X048	40	
54	UD-09X054	42		UD-13X054	36	
60	UD-09X060	40		UD-13X060	28	
64	UD-09X064	28		UD-13X064	26	
76	UD-09X076	32		UD-13X076	24	
89	UD-09X089	24		UD-13X089	18	

Pipe max. Outside - Ø (mm)	19mm INSULATION THICKNESS			25mm INSULATION THICKNESS		
	Code	m/carton		Code	m/carton	
10	UD-19X010	92				
12	UD-19X012	84				
15	UD-19X015	64				
18	UD-19X018	58		UD-25X018	46	
22	UD-19X022	56		UD-25X022	36	
28	UD-19X028	40		UD-25X028	36	
35	UD-19X035	40		UD-25X035	28	
42	UD-19X042	24		UD-25X042	24	
48	UD-19X048	24		UD-25X048	20	
54	UD-19X054	24		UD-25X054	18	
60	UD-19X060	16		UD-25X060	18	
64	UD-19X064	16		UD-25X064	16	
76	UD-19X076	16		UD-25X076	12	
89	UD-19X089	16		UD-25X089	12	

Pipe max. Outside - Ø (mm)	32mm INSULATION THICKNESS		
	Code	m/carton	
15	UD-32X015 •	32	
18	UD-32X018 •	32	
20	UD-32X020 •	24	
22	UD-32X022 •	24	
28	UD-32X028 •	24	
35	UD-32X035 •	18	
42	UD-32X042	16	
48	UD-32X048	12	
54	UD-32X054	12	
60	UD-32X060	10	
64	UD-32X064 •	10	
76	UD-32X076	10	
89	UD-32X089	8	

Other information and remarks			
Length tolerance for tubes	± 1.5%		
	9 - 13mm	± 1.5mm	
	19 - 25mm	± 2.5mm	
	> 32mm	± 3mm	
• Not a stock item			

**SELF-ADHESIVE TUBE (SELF SEAL)**Width - 2m, Colour - Blue, Fire Performance - B<sub>1</sub>-s1.d0

Pipe max. Outside - Ø (mm)	9mm INSULATION THICKNESS			13mm INSULATION THICKNESS		
	Code	m/carton		Code	m/carton	
15	UD-09X015-A	180		UD-13X015-A	112	
18	UD-09X018-A	150		UD-13X018-A	98	
22	UD-09X022-A	124		UD-13X022-A	88	
28	UD-09X028-A	96		UD-13X028-A	64	
35	UD-09X035-A	70		UD-13X035-A	56	
42	UD-09X042-A	56		UD-13X042-A	48	
48	UD-09X048-A	52		UD-13X048-A	40	
54	UD-09X054-A	42		UD-13X054-A	36	
60	UD-09X060-A	40		UD-13X060-A	28	
76	UD-09X076-A	32		UD-13X076-A	24	
89	UD-09X089-A	24		UD-13X089-A	18	

Pipe max. Outside - Ø (mm)	19mm INSULATION THICKNESS			25mm INSULATION THICKNESS		
	Code	m/carton		Code	m/carton	
15	UD-19X015-A	64				
18	UD-19X018-A	58		UD-25X018-A	46	
22	UD-19X022-A	56		UD-25X022-A	36	
28	UD-19X028-A	40		UD-25X028-A	36	
35	UD-19X035-A	40		UD-25X035-A	28	
42	UD-19X042-A	24		UD-25X042-A	24	
48	UD-19X048-A	24		UD-25X048-A	20	
54	UD-19X054-A	24		UD-25X054-A	18	
60	UD-19X060-A	16		UD-25X060-A	18	
76	UD-19X076-A	16		UD-25X076-A	12	
89	UD-19X089-A	16		UD-25X089-A	12	

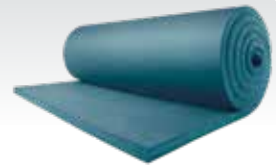
**Other information and remarks**

Length tolerance for tubes	±1.5%
	9 - 13mm ± 1.5mm
	19 - 25mm ± 2.5mm



## CONTINUOUS SHEET (ROLLS)

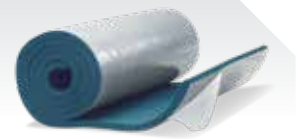
Width - 1m, Colour - Blue, Fire Performance - B-s2, d0



Code	Thickness (mm)	Roll Length (m)	m <sup>2</sup> /carton	
UD-06-99/E	6	15	15	
UD-09-99/E	9	10	10	
UD-13-99/E	13	8	8	
UD-19-99/E	19	5	5	
UD-25-99/E	25	4	4	
UD-32-99/E	32	3	3	

## SELF-ADHESIVE CONTINUOUS SHEET (ROLLS)

Width - 1m, Colour - Blue, Fire Performance - B-s2, d0



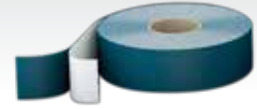
Code	Thickness (mm)	Roll Length (m)	m <sup>2</sup> /carton	
UD-06-99/EA	6	15	15	
UD-09-99/EA	9	10	10	
UD-13-99/EA	13	8	8	
UD-19-99/EA	19	5	5	
UD-25-99/EA	25	4	4	
UD-32-99/EA	32	3	3	

### Other information and remarks

Length tolerance for sheet	±1.5 to 5%	
Thickness tolerance for sheet	6mm	± 1mm
	9 - 19mm	± 1.5mm
	25 - 32mm	± 2mm

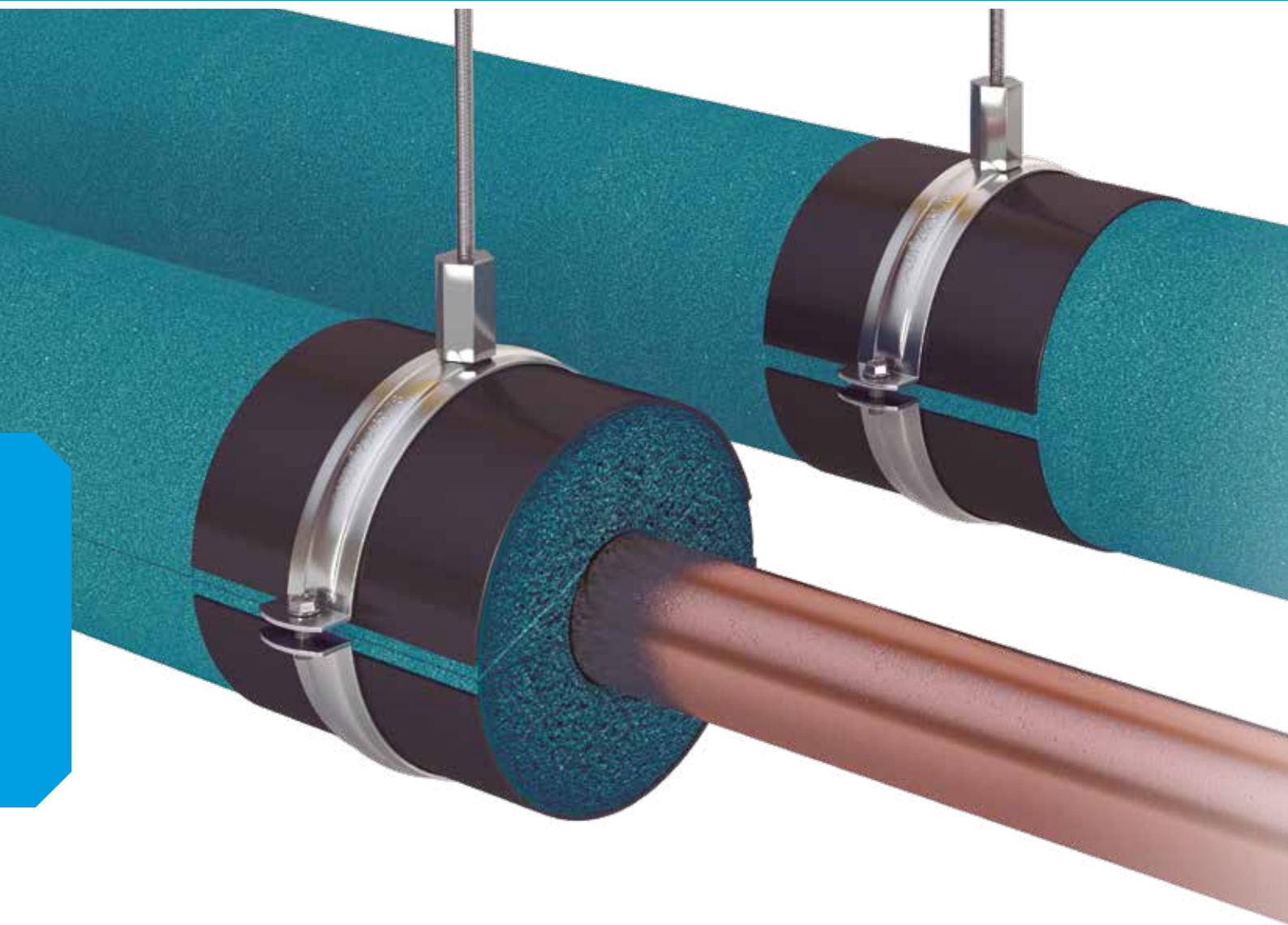
# TAPE

Colour - Blue, Fire Performance - B-s1, d0



Code	Width (mm)	Roll Length (m)	Thickness (mm)	Rolls/carton	
UD-TAPE	50	15	3	12	

# ArmaFix Ultima<sup>®</sup>



## COMPATIBLE PIPE SUPPORTS FOR USE WITH ARMAFLEX ULTIMA LOW SMOKE INSULATION

- Environmentally friendly PET core, with greater load capacity.
- Increased fire safety thanks to low smoke emission
- Prevents thermal bridges and reduction of energy losses
- Very good mechanical resistance
- Compatible with ArmaFlex Ultima tubes

RANGE

## PIPE SUPPORTS & CLAMPS



## RECOMMENDED PRODUCTS

For a complete installation



ArmaFlex Ultima tube



ArmaFlex Ultima 700 adhesive



ArmaFlex Ultima RS850 adhesive

## TECHNICAL DATA

Pipe and duct supports for refrigeration and air conditioning installations to prevent condensation at fixing points. Thermally non-interacting single piece, with 2 ArmaFORM PET-foam sections with self-adhesive closure. All dimensions correspond to the ArmaFlex Ultima tube and sheet range.

<b>Material type</b>	PET foam bearing segments, embedded in and glued to ArmaFlex Ultima elastomeric foam material. Outside bearing shell made of painted 0.8mm thick aluminium sheeting, which simultaneously serves as a vapour barrier for the PET bearing segments.
<b>Colour</b>	Blue
<b>Material information</b>	Traces of silicone can be found on the protective film used on the self-adhesive closures. Please contact customer services for details.
<b>Applications</b>	Thermally non-interacting mounting aid for tubes and sheet in refrigeration and air-conditioning applications, which are to be insulated with ArmaFlex Ultima.
<b>Remarks</b>	When used in applications with intermittent temperatures, thermal length extensions may cause inherent pressure in the installation; this needs to be considered in the overall insulation construction.

Property	Value/Assessment	Standards & Remarks
<b>Temperature Range</b>		
Max service temperature	+110 °C	
Min service temperature	-50 °C (for temperatures below -50 °C please contact our technical department)	
<b>Thermal Conductivity</b>		
	Same as ArmaFlex Ultima elastomeric foam	Declared acc. to EN ISO 13787 Tested acc. to EN12667 & EN ISO 8497
<b>Water Vapour Diffusion Resistance</b>		
	Same as ArmaFlex Ultima elastomeric foam	Tested acc. to EN 12086 & EN 13469
<b>Fire Performance</b>		
Reaction to fire	<b>COMPLETE SYSTEM INSTALLATION:</b> Installed with ArmaFlex Ultima tubes <b>B<sub>L</sub>s1,d0</b> Installed with ArmaFlex Ultima sheet <b>Bs2,d0</b>	Classified acc. to EN 13501-1 Tested acc. to EN 13823 & EN ISO 11925-2
Practical fire behaviour	Self-extinguishing, does not drip & does not spread flames.	
<b>Acoustic Performance</b>		
Reduction of structure-borne sound transmission	According to insulation material used	According to DIN 4109
<b>Other technical features</b>		
Density	95 - 105 kg/m <sup>3</sup> (pipe bearing segments)	
Storage & shelf life	Products with self-adhesive closures to be installed within 1 year	

<b>ArmaFix clamps</b>	
<b>Description</b>	Pipe clamp with quick release closing and combination mounting nut
<b>Material type</b>	Steel with an electrolytic zinc coating to protect from corrosion.
<b>Colour</b>	Silver
<b>Material information</b>	Clamp supplied with combination nut for fixing to threaded rod.
<b>Applications</b>	For use alongside ArmaFlex insulation at pipe hanging points to eliminate thermal bridging on refrigeration and air-conditioning installations.
<b>Fire Performance</b>	The insulation layer does not affect the fire performance of the steel clamp
<b>Screw connections</b>	M8 / M10 combination nut
<b>Tension screws</b>	M6 / M8
<b>Clamp</b>	Width 20mm - 30mm, Thickness 1.5mm - 3mm

## PIPE SUPPORTS AND CLAMPS



Pipe max. Outside - Ø (mm)	Max permissible distance (m)	13mm INSULATION THICKNESS			CLAMPS 13mm		
		Code	Pieces/carton		Code	Pieces/carton	
10	2	ULP13(9)-10/12 •	32		PCX 025/030	25	
12	2	ULP13(9)-10/12 •	32		PCX 025/030	25	
15	2	ULP13(9)-15/18 •	32		PCX 033/037	25	
18	2	ULP13(9)-15/18 •	32		PCX 033/037	25	
22	2.75	ULP13(9)-22/25 •	32		PCX 042/046	25	
25	2.75	ULP13(9)-22/25 •	32		PCX 042/046	25	
28	3	ULP13(9)-28/30 •	32		PCX 047/052	25	
30	3	ULP13(9)-28/30 •	32		PCX 047/052	25	
35	3.5	ULP13(9)-35/28 •	28		PCX 054/058	25	
38	3.5	ULP13(9)-35/38 •	28		PCX 054/058	25	
42	3.75	ULP13(9)-42/45 •	28		PCX 063/068	25	
45	3.75	ULP13(9)-42/45 •	28		PCX 063/068	25	
48	4.25	ULP13(9)-48 •	28		PCX 068/073	10	
54	4.25	ULP13(9)-54/57 •	28		PCX 068/073	10	
57	4.25	ULP13(9)-54/57 •	28		PCX 068/073	10	
60	4.75	ULP13(9)-60/64 •	24		PCX 082/085	10	
64	4.75	ULP13(9)-60/64 •	24		PCX 082/085	10	
76	5.50	ULP13(9)-76/80 •	20		PCX 092/099	10	
80	5.50	ULP13(9)-76/80 •	20		PCX 092/099	10	
89	6	ULP13(9)-89 •	16		PCX 108/112	10	

## Other information

- Not a stock item

Pipe max. Outside - Ø (mm)	Max permissible distance (m)	19mm INSULATION THICKNESS			CLAMPS 19mm		
		Code	Pieces/carton		Code	Pieces/carton	
10	2	ULP19-10/12 •	28		PCX 038/041	25	
12	2	ULP19-10/12 •	28		PCX 038/041	25	
15	2	ULP19-15/18 •	28		PCX 047/052	25	
18	2	ULP19-15/18 •	28		PCX 047/052	25	
22	2.75	ULP19-22/25 •	28		PCX 054/058	25	
25	2.75	ULP19-25/25 •	28		PCX 054/058	25	
28	3	ULP19-28/30 •	28		PCX 059/063	25	
30	3	ULP19-28/30 •	28		PCX 059/063	25	
35	3.5	ULP19-35/28 •	24		PCX 063/068	25	
38	3.5	ULP19-35/38 •	24		PCX 063/068	25	
42	3.75	ULP19-42/45 •	24		PCX 068/073	10	
45	3.75	ULP19-42/45 •	24		PCX 068/073	10	
48	4.25	ULP19-48 •	24		PCX 072/080	10	
54	4.25	ULP19-54/57 •	24		PCX 082/085	10	
57	4.25	ULP19-54/57 •	24		PCX 082/085	10	
60	4.75	ULP19-60/64 •	20		PCX 088/092	10	
64	4.75	ULP19-60/64 •	20		PCX 088/092	10	
76	5.50	ULP19-76/80 •	16		PCX 099/103	10	
80	5.50	ULP19-76/80 •	16		PCX 099/103	10	
89	6	ULP19-89 •	12		PCX 112/118	10	

Pipe max. Outside - Ø (mm)	Max permissible distance (m)	25mm INSULATION THICKNESS			CLAMPS 25mm		
		Code	Pieces/carton		Code	Pieces/carton	
15	2	ULP25-15/18 •	28		PCX 059/063	25	
18	2	ULP25-15/18 •	28		PCX 059/063	25	
22	2.75	ULP25-22/25 •	28		PCX 063/068	25	
25	2.75	ULP25-25/25 •	28		PCX 063/068	25	
28	3	ULP25-28/30 •	28		PCX 068/073	10	
30	3	ULP25-28/30 •	28		PCX 068/073	10	
35	3.5	ULP25-35/28 •	24		PCX 072/080	10	
38	3.5	ULP25-35/38 •	24		PCX 072/080	10	
42	3.75	ULP25-42/45 •	24		PCX 082/085	10	
45	3.75	ULP25-42/45 •	24		PCX 082/085	10	
48	4.25	ULP25-48 •	24		PCX 088/092	10	
54	4.25	ULP25-54/57 •	24		PCX 092/099	10	
57	4.25	ULP25-54/57 •	24		PCX 092/099	10	
60	4.75	ULP25-60/64 •	20		PCX 099/103	10	
64	4.75	ULP25-60/64 •	20		PCX 099/103	10	
76	5.50	ULP25-76/80 •	16		PCX112/118	10	
80	5.50	ULP25-76/80 •	16		PCX112/118	10	
89	6	ULP25-89 •	12		PCX137/142	10	

**Other information**

- Not a stock item



# ArmaFlex Ultima<sup>®</sup> 700

## COMPATIBLE PIPE SUPPORTS FOR USE WITH ARMAFLEX ULTIMA LOW SMOKE INSULATION

- New generation of blue coloured adhesives developed especially for bonding ArmaFlex Ultima
- Recommended for insulation materials based on Armaprene<sup>®</sup> synthetic foams
- Sustainable buildings - ArmaFlex Ultima RS850 helps meet the requirements for sustainable building and the certification of "green buildings"



One-component adhesive specifically developed for ArmaFlex Ultima and insulating materials based on Armaprene <sup>®</sup> synthetic rubbers.	
<b>Material type</b>	Contact adhesive on polychloroprene basis, free of aromatic components.
<b>Colour</b>	Blue
<b>Applications</b>	Application on pipes and tanks with service temperature up to +110°C. Gluing of ArmaFlex Ultima and insulation materials based on Armaprene <sup>®</sup> synthetic rubbers.
<b>Assembly</b>	Please observe our installation instructions/product data sheets. Application temperature: ideally +15°C to +20°C, not below 0°C. At temperatures below +5°C or high humidity approx above 80%), increased condensation may form on the surfaces to be glued or adhesive films. In these cases bonding is poor or impossible. This can be tested by using absorbent paper (blotting or crepe paper). Work should not be carried out on operating plant or areas exposed to strong sunlight.
<b>Remarks</b>	The adhesive achieves its final strength after 36 hours. Only then should plant be put into operation. Wait 36 hours before applying coatings (exception: Armafinish 99), adhesive tape, coverings etc.

# TECHNICAL DATA

Temperature Range	
Max service temperature	+110 °C (for temperatures above +110 °C please contact our technical department)
Min service temperature	-50 °C (for temperatures below -50 °C please contact our technical department)
Performance	
Coverage (guidance only)	<p>Minimum consumption with the adhesive applied to both surfaces: ArmaFlex tubes (thickness &gt; consumption unslit &gt; consumption slit)</p> <ul style="list-style-type: none"> <li>• 10mm &gt; 1,120m per litre &gt; 140m per litre</li> <li>• 20mm &gt; 280m per litre &gt; 70m per litre</li> <li>• 30mm &gt; 175m per litre &gt; 45m per litre</li> <li>• 40mm &gt; 130m per litre &gt; 35m per litre</li> </ul> <p>Sheets</p> <ul style="list-style-type: none"> <li>• 3-4 m<sup>2</sup> per litre</li> </ul>
Storage & shelf life	
<p>12 months in an unopened container. Store as cool as possible but protected from frost. In the event of frost any gelification is reversible on warming</p>	
Preparation of surfaces	
<p>Clean surfaces and ArmaFlex Ultima surface with ArmaFlex Cleaner. Compatibility with bases:</p> <ul style="list-style-type: none"> <li>• Very good adhesion to metallic surfaces.</li> <li>• The adhesive's compatibility with colour coated surfaces needs to be tested.</li> <li>• Incompatible with asphalt, bitumen and red lead (linseed oil-based)</li> </ul>	
Working time	
Drying time	3- 5 mins
Contact adhesion	15 - 20 mins
Setting	36 hours
<p>The open time depends on the quantity as well as indoor climate conditions. Before operating plant the setting time needs to be allowed to elapse.</p>	
Other technical features	
Flash point	approx -26 °C
Explosion limits	Lower: approx 1.1 Vol % Upper: approx 12.8 Vol %
Hazard class	Highly flammable
Ageing stability	Very good
Resistance to weathering	Very good
Recycling	<p>Allocation of a waste code number, according to the European Waste Catalogue, should be carried out in agreement with the regional waste disposal company. For details see relevant Safety Data Sheet. Packaging must be emptied of all residues. Packaging with traces of cured product can be recycled. Packaging with uncured product must be recycled into new product.</p>
Transport classes	Depending on the type of transport

## ARMAFLEX ULTIMA 700



Code	Description	Pieces/carton	£/pc
AHU-700/1.0	ArmaFlex Ultima 700 Adhesive, 1 Litre cans	12	37.17

# ArmaFlex Ultima<sup>®</sup> RS850

## COMPATIBLE PIPE SUPPORTS FOR USE WITH ARMAFLEX ULTIMA LOW SMOKE INSULATION

- New generation of blue coloured adhesives developed especially for bonding ArmaFlex Ultima
- Recommended for insulation materials based on Armaprene<sup>®</sup> synthetic foams
- Sustainable buildings - ArmaFlex Ultima RS850 helps meet the requirements for sustainable building and the certification of "green buildings"



Non-drip one component adhesive gel form. Specifically designed for processing ArmaFlex and insulating materials based on Armaprene <sup>®</sup> synthetic rubbers	
<b>Material type</b>	Thixotropic one component contact adhesive based on polychloroprene.
<b>Colour</b>	Blue
<b>Material special information</b>	Gel based
<b>Applications</b>	Application on pipes and tanks with service temperature up to +70 °C. Gluing of ArmaFlex Ultima and insulation materials based on Armaprene <sup>®</sup> synthetic rubbers.
<b>Assembly</b>	Please observe our installation instructions/product data sheets. Application temperature: ideally +15 °C to +20 °C, not below +10 °C. At temperatures below +5 °C or high humidity (approx above 80%), increased condensation may form on the surfaces to be glued or adhesive films. In these cases bonding is bad or impossible. This can be tested by using absorbent paper (blotting or crepe paper). Work should not be carried out on operating plant or areas exposed to strong sunlight.
<b>Remarks</b>	The adhesive achieves its final strength after 24 hours. The system should not be operated during this period and any self-adhesive tape or protective coatings should only be applied after this period has elapsed.

# TECHNICAL DATA

Temperature Range	
Max service temperature	+70 °C
Min service temperature	-40 °C (for temperatures below -40 °C please contact our technical department)
Performance	
Coverage (guidance only)	
Storage & shelf life	
18 months in an unopened container. Store between 0 °C and 35 °C in a dry place. Do not store with explosive substances or spontaneously combusting substances. In the event of frost any gelling is reversible on warming	
Preparation of surfaces	
Clean surfaces and ArmaFlex Ultima surface with ArmaFlex Cleaner. Compatibility with bases: <ul style="list-style-type: none"> <li>• Very good adhesion to metallic surfaces.</li> <li>• The adhesive's compatibility with colour coated surfaces needs to be tested.</li> <li>• Incompatible with asphalt, bitumen, red lead (linseed oil-based), polystyrene and plasticated PVC</li> </ul>	
Working time	
Drying time	2 min
Contact adhesion	10 - 15 mins
Setting	24 hours
The open time depends on the quantity as well as indoor climate conditions. Before operating plant the setting time needs to be allowed to elapse.	
Other technical features	
Flash point	approx -26 °C
Explosion limits	Lower: approx 1.1 Vol % Upper: approx 12.8 Vol %
Hazard class	Highly flammable
Ageing stability	Very good
Resistance to weathering	Very good
Recycling	Allocation of a waste code number, according to the European Waste Catalogue, should be carried out in agreement with the regional waste disposal company. For details see relevant Safety Data Sheet. Packaging must be emptied of all residues. Packaging with traces of cured product can be recycled. Packaging with uncured product must be recycled into new product.
Transport classes	Depending on the type of transport

## ARMAFLEX ULTIMA RS850



Code	Description	Pieces/carton	£/pc
AHU-RS850/0.5	ArmaFlex Ultima RS850 Adhesive, 0.75 Litre cans	6	35.61

# ArmaFlex SF Cleaner

## SOLVENT FREE CLEANER FOR SURFACE PREPARATION OF ARMAFLEX INSTALLATIONS

- Meets the higher requirements of green building schemes
- Prepares surfaces for good adhesion of Armaflex products
- Can be applied sparingly and precisely thanks to the practical spray bottle



ARMAFLEX SF Cleaner	
Water-soluble cleaner	
<b>Colour</b>	Beige
<b>Material special info</b>	Liquid
<b>Applications</b>	Cleaning of surfaces where ArmaFlex is to be installed.
<b>Assembly</b>	To ensure a perfect adhesion all contaminated surfaces, including ArmaFlex, must be cleaned.
<b>Remarks</b>	ArmaFlex SF cleaner to be sprayed onto areas that require cleaning and allowed to settle (time depending on the amount of dirt) before washing off.

## TECHNICAL DATA

Technical features	
<b>Storage &amp; shelf life</b>	12 months sealed in original container. Keep container tightly closed in a cool, well ventilated place. Protect from frost and do not store below +5 °C.
<b>Preparation of surfaces</b>	Clean surfaces and ArmaFlex surface with ArmaFlex Cleaner. Compatibility with bases: <ul style="list-style-type: none"><li>• Very good adhesion to metallic surfaces.</li><li>• The adhesive's compatibility with colour coated surfaces needs to be tested.</li><li>• Incompatible with asphalt, bitumen and red lead (linseed oil-based)</li></ul>
<b>Flash point</b>	>100 °C
<b>Explosion limits</b>	
<b>Recycling</b>	Dispose of waste according to applicable legislation, for more details see the relevant safety data sheets.
<b>Transport classes</b>	Non hazardous material as defined by the transport regulations.

## ARMAFLEX CLEANER



Code	Description	Pices/carton
CLEANER/1.0	Special cleaner for use with ArmaFlex Adhesive	4
SF-CLEANER/1.0	Solvent free cleaner for use with ArmaFlex Adhesive	6