

# BD 10/8 M4 0,59kW (251340260)

## GENERAL DATA



### FAN DOUBLE INLET

#### MANUFACTURING FEATURES:

- Galvanised steel sheet housing.
- Polyamide impeller reinforced with fibreglass in models 7/7, 9/9, 10/10 and 12/12. The impeller of the rest of models are made of galvanised steel sheet.
- Double inlet forward curved impeller in all models.
- Supplied with mounting feet (included in price).
- Exclusive system Casals fixing motor and turbine fan by flexible arms silent blocks to avoid any vibration. Arms in compliance with ROHS regulations 2002/95 / EC (Restriction of Hazardous Substances in electrical and electronic equipment)
- Closed motors specially designed Casals: extruded aluminum housing, all protected inside the terminal box on the motor IP 65 protection and motor with IP54 protection and Class F insulation standard voltages: 230V 50Hz in single phase and 230/400V 50Hz three-phase.
- Single phase motors with controllable voltage speed. Three phase motors controllable using a frequency speed controller

#### APPLICATIONS:

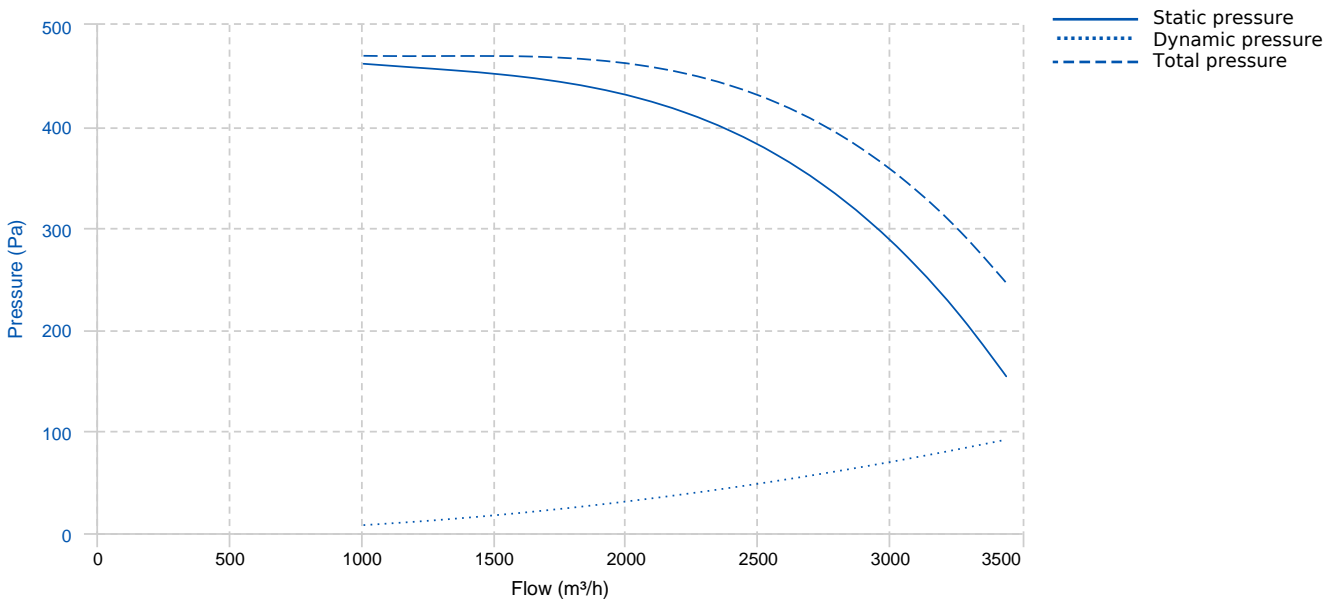
Designed for assembly in equipment:

- Ventilation boxes and air handling units.
- Centrifugal heaters.
- Industrial and professional kitchen hoods.
- Maximum working temperature: 50°C for single phase motors and 60°C for three phase motors.

#### UNDER REQUEST

- Impeller made of galvanized steel sheet.
- MBI assembled

## PERFORMANCE CURVE

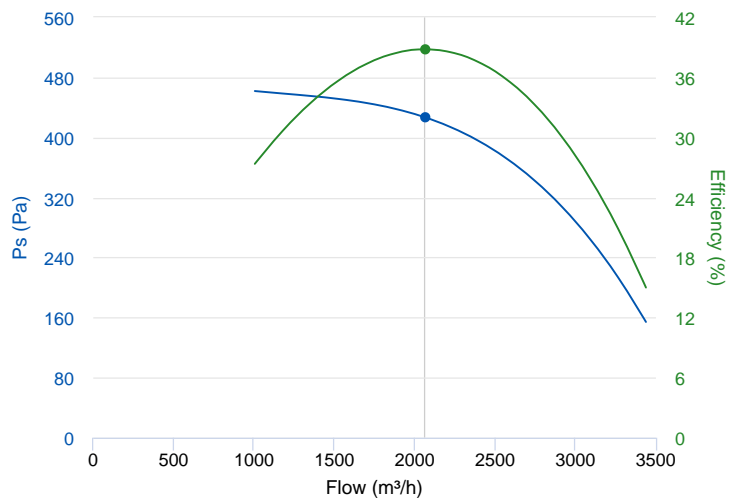


## TECHNICAL DATA

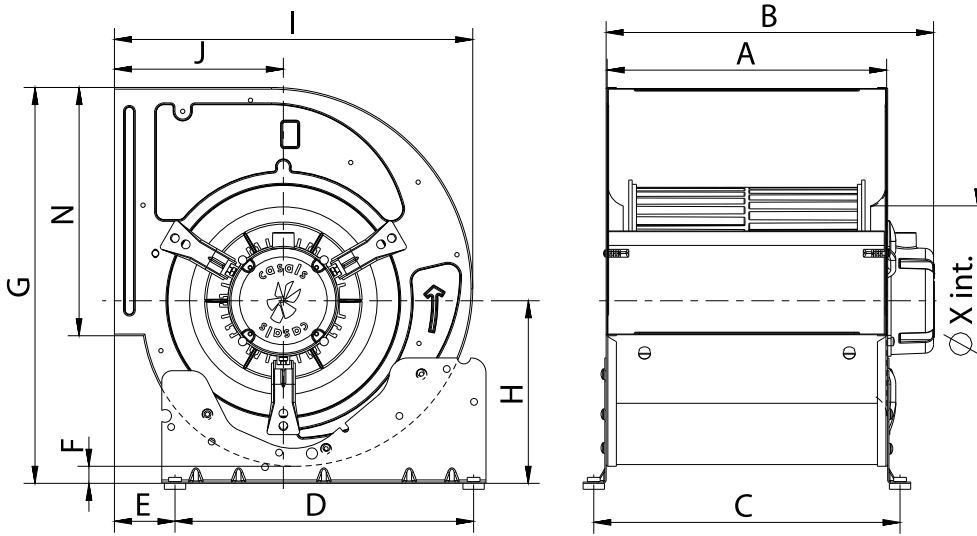
Fan							
RPM	1340	Approx. weight	22 kg	Max. Flow	3440 m <sup>3</sup> /h		
Motor							
Power	0,59 kW	RPM	1340	Capacitor	28μF 400V	I max. (230V)	4,5 A
Size	STC80	Approx. weight	7.7 kg	Efficiency (%)	68 %	FP	0.96

## ERP DATA

Fan data sheet		
Fan type	Centrifugal fan radial or forward blades	
Installation category	A: Outlet and Inlet free discharge	
Efficiency category	Static	
The fan has to be installed with VF	No	
Motor power (kW)	0.59	
	Fan values	ERP Requirements 2015
Max. efficiency (%)	38.8	36.45
Efficiency grade (N)	46.35	44
Pabs (kW)	0.64	
Flow (m <sup>3</sup> /h)	2064.92	
Static pressure (Pa)	426.79	
Speed (m/s)	1340	
Specific ratio	1.00	



## DIMENSIONS

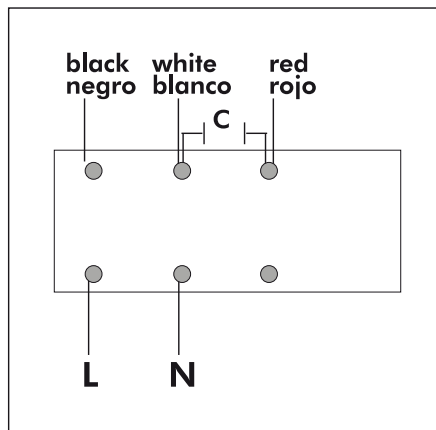


### Dimensions (mm)

A	265	B m <sup>à</sup> x	339	C	294	D	350	E	70,5
F	20	G	464	H	214	I	420	J	198
N	291	X	220						

## WIRING DIAGRAM

### SINGLE PHASE MOTOR MOTOR MONOFÁSICO



## ACCESSORIES



**MANUAL SINGLE PHASE SPEED CONTROLLER**  
REG 5A  
REF: 960710050



**SAFETY SWITCH**  
INT 25 3P A  
REF: INT253PA



**OUTLET PROTECTION GUARD FOR FANS**  
RI 10/8  
REF: 960000405



**PROTECTION GRID FOR BD FANS, MOTOR SIDE**  
RM 10 (T80)  
REF: 960000804



**INLET PROTECTION GUARD FOR CENTRIFUGAL FANS**  
RA 10  
REF: 960650100

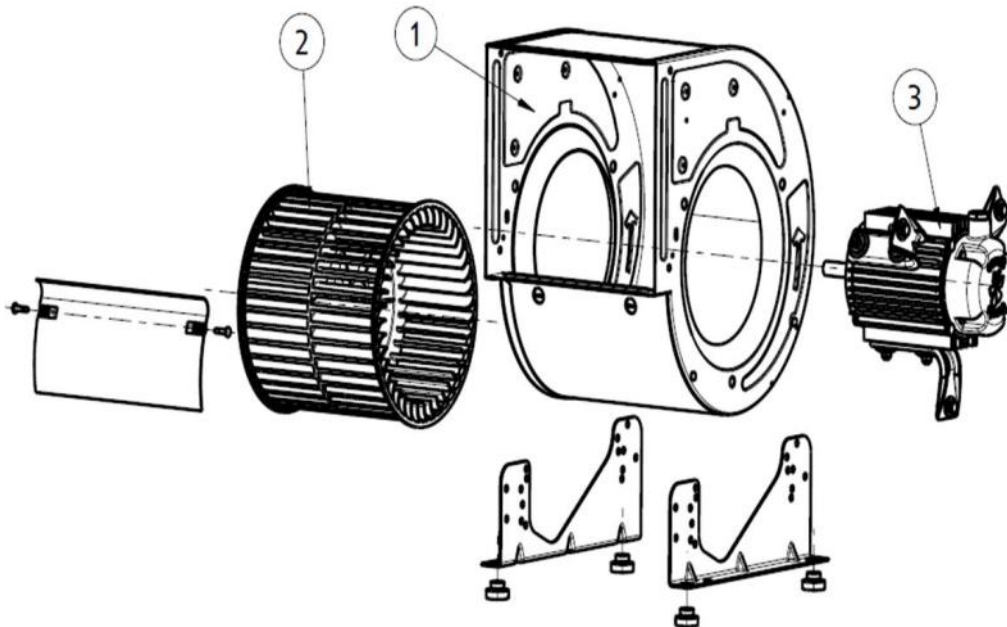


**OUTLET FLANGE FOR BD AND BV FANS**  
MBI 10/8  
REF: 251331691



**MOUNTING SUPPORT FOR LOW PRESSURE FANS**  
S 10  
REF: 960520100

## SPARE PARTS



	Code	Model	Qty
1	251339421	CASING BD10/8	x1
2	251339381	TURBINE BD 10/8	x1
3	251349478	MOTOR+SUPPORTS BD10/8M4 STC	x1
3	720331145	MOTOR BD M4 0,59kW 230V	x1