

HM 45 M4 (A0:6) 0,25kW 35°

GENERAL DATA



LONG CASE VARIABLE PITCHBLADES

MANUFACTURING FEATURES:

- Reinforced fan casing manufactured in rolling steel sheet.
- Motor-impeller modular assembly for complete versatility.
- Polyester powder finishing coat.
- Standard asynchronous squirrel-cage motor with IP-55 protection and Class F insulation. Manufactured with standard voltages: 230V 50Hz in single phase motors and 230/400V 50Hz in three phase motors up to 4kW and 400/690V 50Hz for higher powers.
- HM : Polypropylene impeller (A2 profile) or polyamide impeller reinforced with fibreglass (other profiles) with variable pitch angle.
- HMA : Cast aluminium impeller with variable pitch angle.

APPLICATIONS:

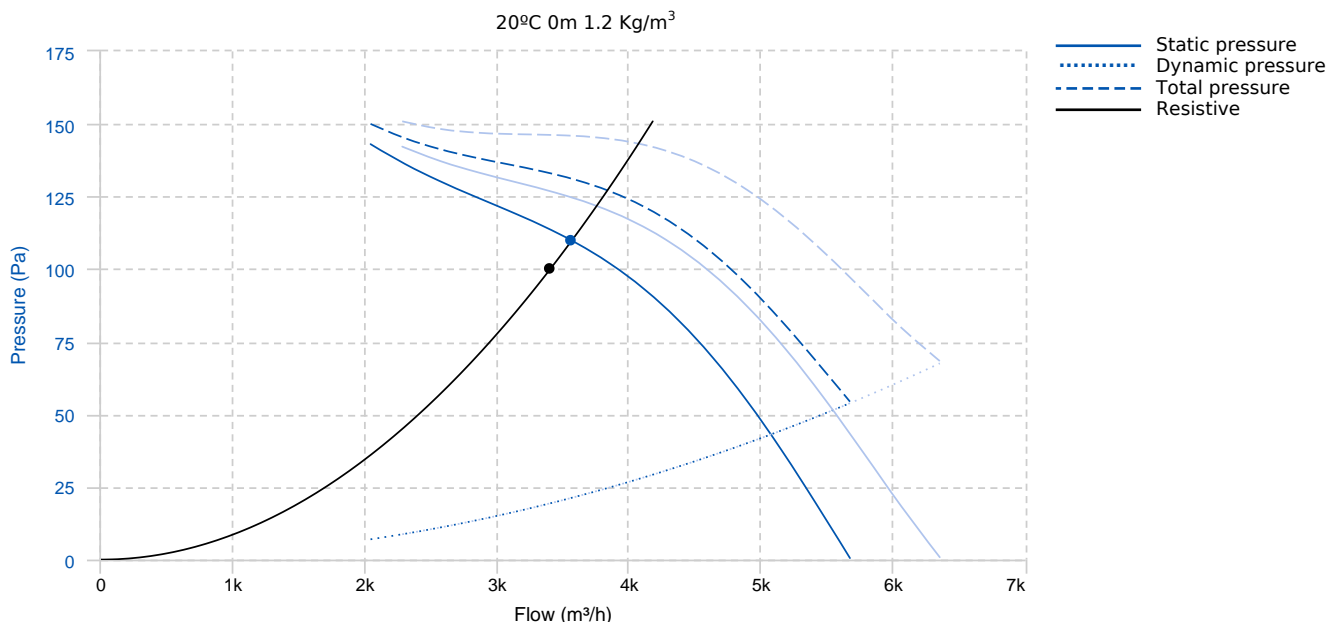
Designed for inline installation, they are suitable for:

- Air renewal in buildings and industries.
- Smoke extraction (max 50-60°C).
- Maximum working temperature: 1ph 50°C, 3ph 60°C.

UNDER REQUEST:

- 100% reversible impeller.
- 60Hz fans and special voltages.
- Hot-dipped galvanised or stainless steel housing.

PERFORMANCE CURVE



Design point

Flow (m ³ /h)	3400	Pressure (Pa)	100
--------------------------	------	---------------	-----

Service point

Angle	35	T.max (°C)	60	Q (m³/h)	3563.65	Ps (Pa)	109.86
Pd (Pa)	21.28	Pt (Pa)	131.14	Speed (m/s)	5.96	Security coefficient	1.25
Fan total efficiency	36.77	Mechanical total efficiency	65.01	Pabs (kW) 1.2 kg/m³	0.35	Pw.mec (kW)	0.2
Precom (kW)	0,25	SFP (W/l/s) 1.2 kg/m³	0.36				

TECHNICAL DATA

Fan

RPM	-	Approx. weight	22.5 kg	Max. Flow	6360 m³/h
-----	---	----------------	---------	-----------	-----------

Motor

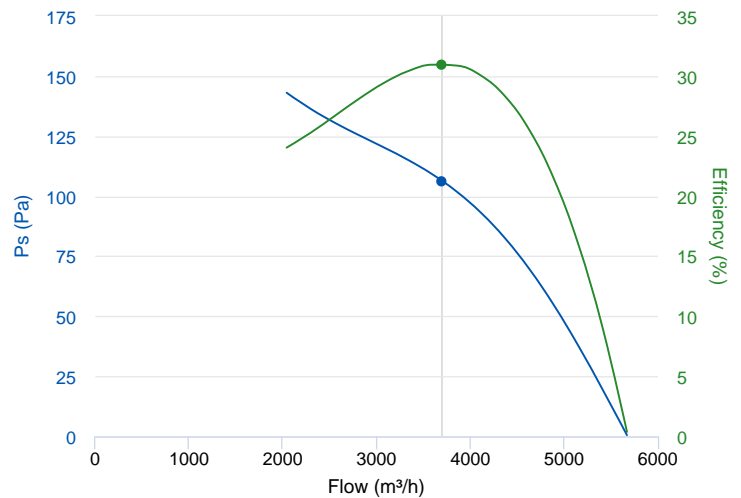
Power	0,25 kW	RPM	1410	Capacitor	12µF 450V	I max. (230V)	1,6 A
Size	71	Approx. weight	6.5 kg	Efficiency (%)	68,5 %	FP	0,99

ERP DATA

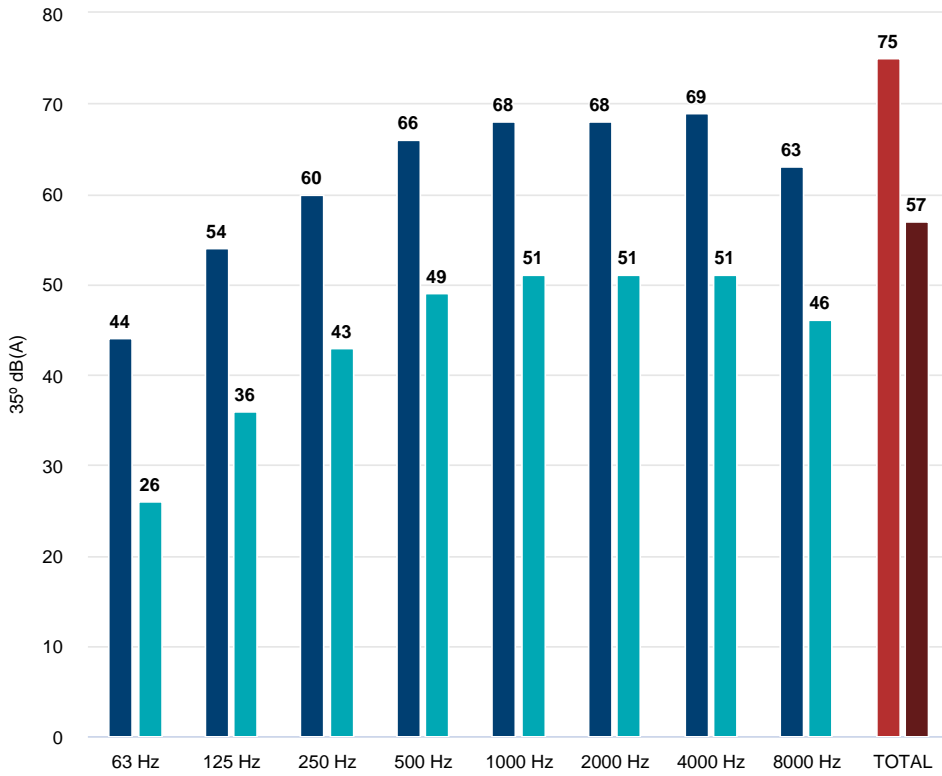
Fan data sheet

Fan type	Axial fan
Installation category	A: Outlet and Inlet free discharge
Efficiency category	Static
The fan has to be installed with VF	No
Motor power (kW)	0.25

	Fan values	ERP Requirements 2015
Max. efficiency (%)	30.99	30.83
Efficiency grade (N)	40.16	40
Pabs (kW)	0.355	
Flow (m³/h)	3702.84	
Static pressure (Pa)	106.29	
Speed (m/s)		
Specific ratio	1.00	



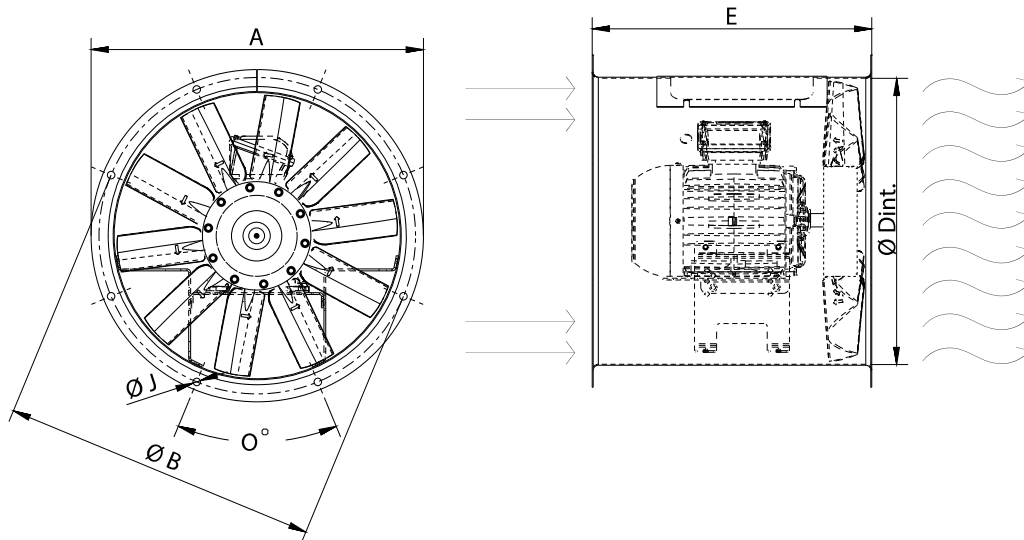
ACOUSTIC DATA (INLET)



Sound power	
63 Hz	44
125 Hz	54
250 Hz	60
500 Hz	66
1000 Hz	68
2000 Hz	68
4000 Hz	69
8000 Hz	63
TOTAL	75

Sound pressure 3m Q=2	
63 Hz	26
125 Hz	36
250 Hz	43
500 Hz	49
1000 Hz	51
2000 Hz	51
4000 Hz	51
8000 Hz	46
TOTAL	57

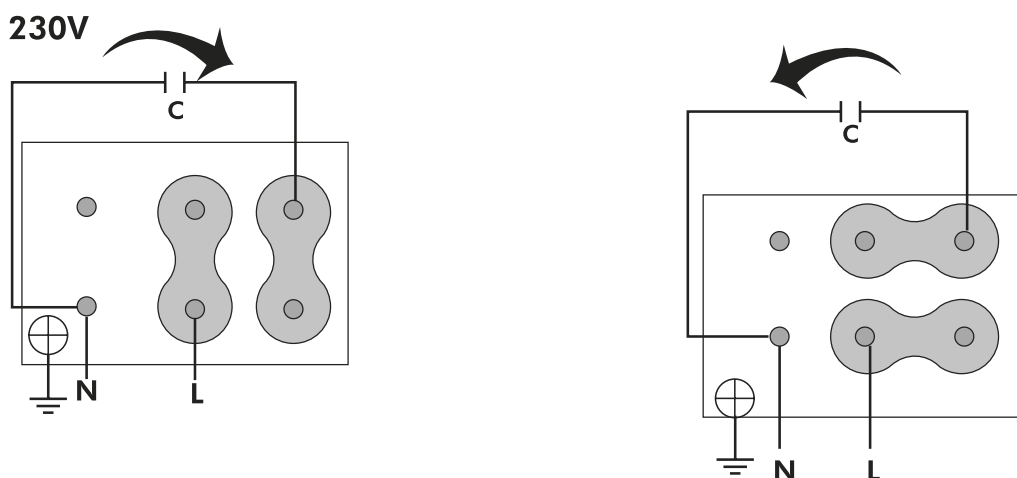
DIMENSIONS



Dimensions (mm)

E	455	O	8X45°	ØA	525	ØB	500	ØD	452
ØJ	12								

WIRING DIAGRAM



ACCESSORIES



PROTECTION GUARD FOR LONG CASE AXIAL FANS
RP 45
REF: 960310100



CASE FANS MOUNTING SUPPORT
PO 45
REF: 960001655



CONNECTION FLANGE
AC 450
REF: 960003213



ANTI-VIBRATING FLANGE 400°/2H
BA-400 45
REF: 960002055



TILT MOUNTING SUPPORT FOR HM FANS
PS 45
REF: 960120101



ANTI-VIBRATION JOINT
JE 45
REF: 300719201



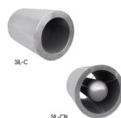
CIRCULAR SILENCER
SIL-C 450/450
REF: 960045045



CIRCULAR SILENCER
SIL-C 450/ 675
REF: 960045675



CIRCULAR SILENCER
SIL-C 450/900
REF: 960045090



CIRCULAR SILENCER
SIL-CN 450/450
REF: 961045045



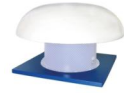
**CIRCULAR SILENCER
SIL-CN 450/ 675
REF: 961045675**



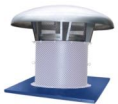
**CIRCULAR SILENCER
SIL-CN 450/900
REF: 961045090**



**CIRCULAR-CIRCULAR ANTI-VIBRATION FLANGE
BAD 12 (Ø450)
REF: 960003462**



**ROOF KIT FOR CASE FANS
KIT TE 45
REF: KTE45**



**METALLIC ROOF KIT FOR CASE FANS
KIT TM 45
REF: KTM45**



**CASE TO PORTABLE CONVERSION KIT
KIT HI 45
REF: KHI45**



**SAFETY SWITCH
INT (GENERIC)**



**ANTI-VIBRATION RUBBER BLOCK
AVR (GENERIC)**



**ANTI-VIBRATION SPRING BLOCK
AVS (GENERIC)**