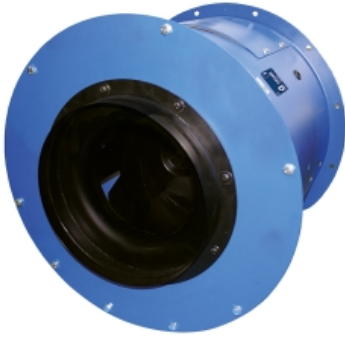


# HMR EVO 450 T4/T8 1,1/0,18kW (2614506432V)

## GENERAL DATA



LONG CASE FAN WITH BACKWARD IMPELLER

MANUFACTURING FEATURES:

- Reinforced fan casing manufactured in rolling steel sheet. Polyester powder finishing coat. Housing with motor access door.
- High efficiency backward impeller with self-cleaning system in steel sheet, balanced static and dynamically in origin.
- Models with AC motor inside the air flow. Standard asynchronous squirrel cage motor with IP-55 protection and Class F insulation. Standard voltages of 230V50Hz for single phase motors, 230/400V50Hz & 400/690V 50Hz for three-phase 1 speed motors and 400V50Hz for 2 speed motors.

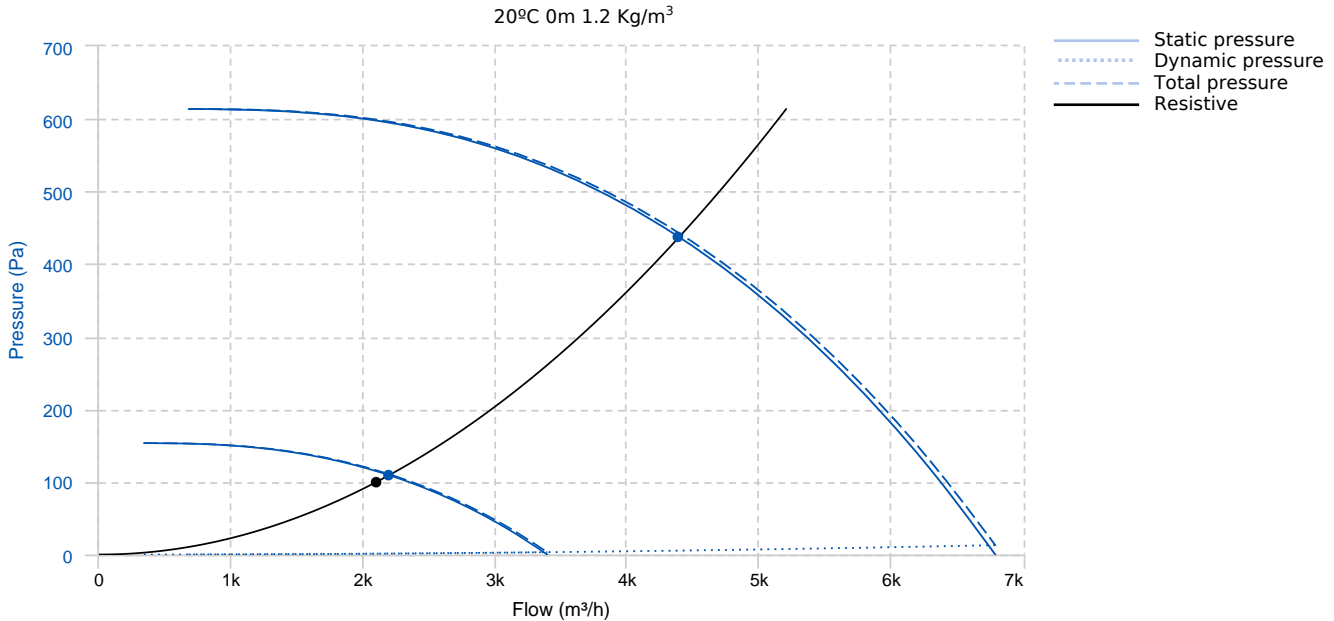
- Maximum working temperature 60°C.

APPLICATIONS:

Designed for inline installation, they are suitable for:

- Air renewal in buildings and industries.
- Smoke extraction.

## PERFORMANCE CURVE



### Design point

Flow (m <sup>3</sup> /h)	2100	Pressure (Pa)	100
--------------------------	------	---------------	-----

## Service point

	8P	4P		8P	4P
Speed	8P	4P	Pt (Pa)	110.65	442.6
T.max (°C)	60	60	Speed (m/s)	1.5	3
Q (m³/h)	2195.44	4390.87	Security coefficient	10.22	1.28
Ps (Pa)	109.3	437.18	Mechanical total efficiency	64.86	64.86
Pd (Pa)	1.35	5.41	Pw.mec (kW)	0.11	0.86

## TECHNICAL DATA

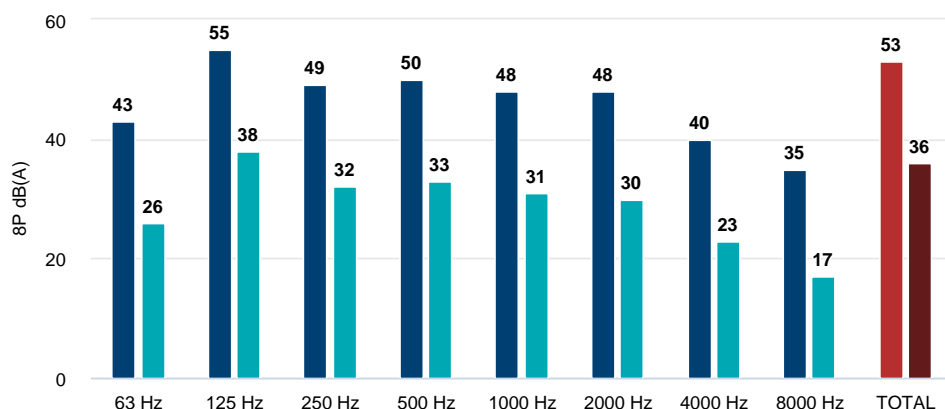
### Fan

Approx. weight	68 kg	Max. Flow	6790 m³/h
----------------	-------	-----------	-----------

### Motor

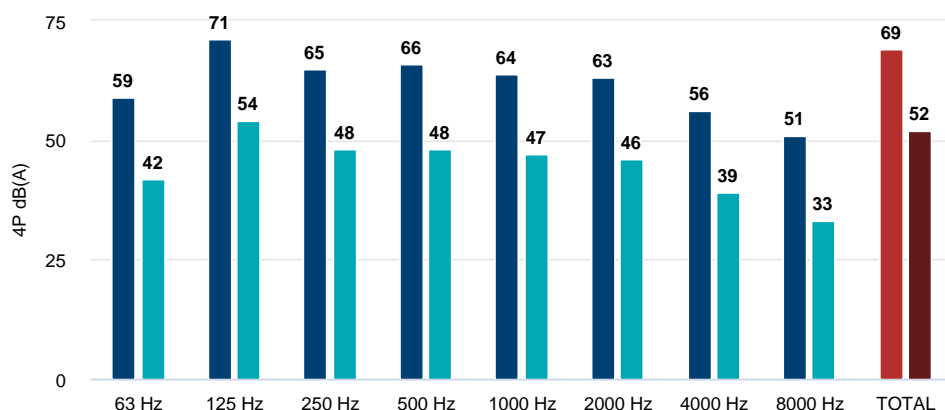
Power	1,1/0,18 kW	RPM	1400/710	I max. (400V)	2,67/1,08 A	Size	90S
Approx. weight	14.3 kg	Efficiency (%)	75/59,5 %	FP	0,79/0,48		

## ACOUSTIC DATA ( )



### Sound power

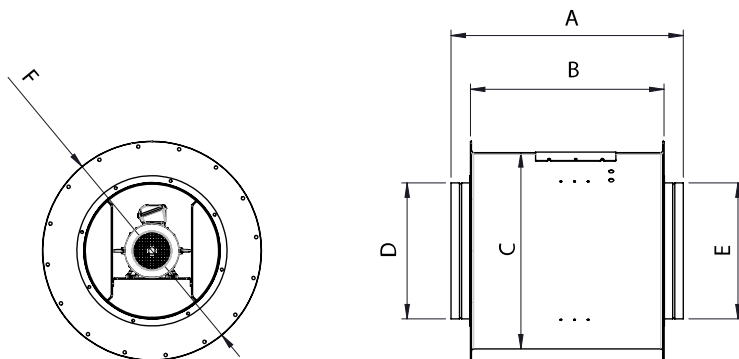
	8P	4P
63 Hz	43	59
125 Hz	55	71
250 Hz	49	65
500 Hz	50	66
1000 Hz	48	64
2000 Hz	48	63
4000 Hz	40	56
8000 Hz	35	51
TOTAL	53	69



### Sound pressure 3m Q=2

	8P	4P
63 Hz	26	42
125 Hz	38	54
250 Hz	32	48
500 Hz	33	48
1000 Hz	31	47
2000 Hz	30	46
4000 Hz	23	39
8000 Hz	17	33
TOTAL	36	52

## DIMENSIONS

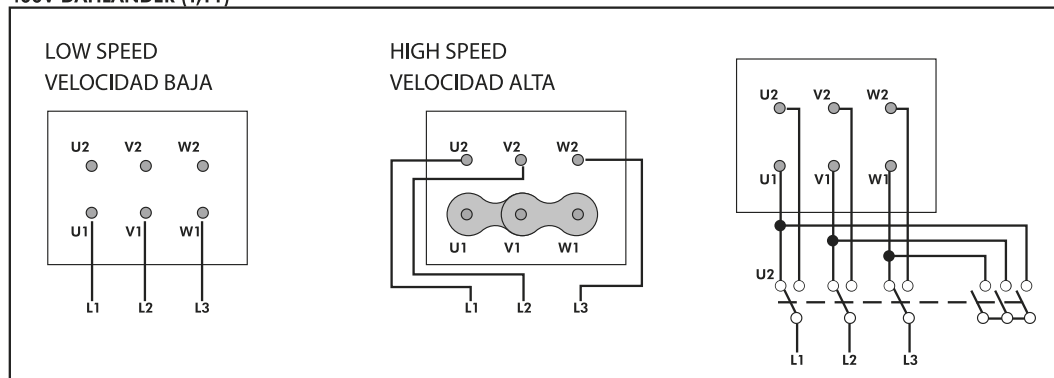


### Dimensions (mm)

A	851	B	709	C	719	D	498	E	498
F	802								

## WIRING DIAGRAM

### 400V DAHLANDER (Y,YY)



## ACCESSORIES



**FREQUENCY SPEED CONTROLLER**  
**SFC 230 I 7A \***  
**REF: SFC230I007**



**FREQUENCY SPEED CONTROLLER**  
**SFC 400 III 3,6A \***  
**REF: SFC400III4**

