

HMX 35 T4 (A0:6) 0,25kW 40° Zone 2: FAN (Ex h IIB+H2 T3 Gc) + MOTOR (Ex ec IIC T3 Gc)

GENERAL DATA



ATEX LONG CASE AXIAL

MANUFACTURING FEATURES:

- Reinforced fan casing manufactured in rolling steel sheet.
- Motor-impeller modular assembly for complete versatility.
- Polyester powder finishing coat.
- Cast aluminum impeller with variable pitch angle.
- Motor ATEX asíncrono normalizado. Certificado según zona indicada, IP55 protection and class F insulation. Manufactured with standard voltages: 230/400V 50Hz in three phase motors up to 4kW and 400/690V 50Hz for higher powers.

APPLICATIONS

Designed for wall or duct installation, they are suitable for:

- Air renewal in buildings and industries.
- Smoke extraction (max 40°C).
- Working temperature: ambient from -20°C to 40°C
- Ventilation in indoor environments classified as ATEX

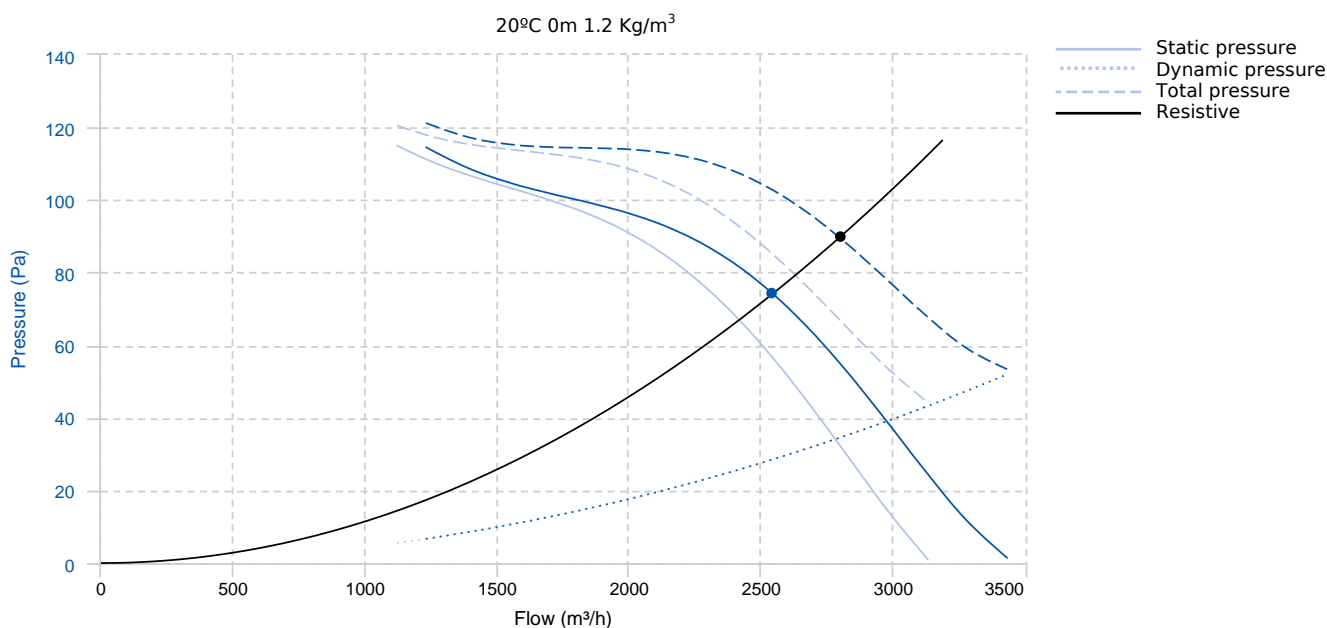
UNDER REQUEST

- B-form or 100% reversible impeller.
- 60Hz fans and special voltages.

ORGANISM: L.O.M.
CERTIFICAT Nº: LOM 17.755X-C

In compliance with the Directive 2014/34/UE

PERFORMANCE CURVE



Design point

Flow (m ³ /h)	2800	Pressure (Pa)	90
--------------------------	------	---------------	----

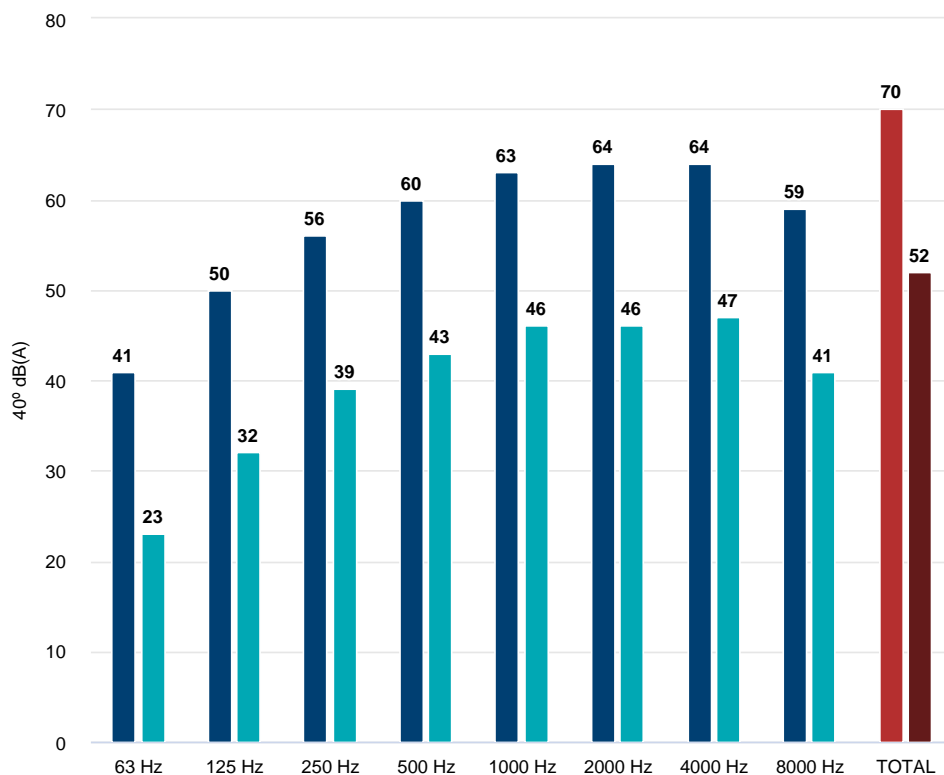
Service point

Angle	40	T.max (°C)	60	Q (m³/h)	2542.31	Ps (Pa)	74.2
Pd (Pa)	28.55	Pt (Pa)	102.75	Speed (m/s)	6.9	Security coefficient	2.2
Mechanical total efficiency	62.36	Pw.mec (kW)	0.11	Precom (kW)	0,25		

TECHNICAL DATA

Fan							
RPM	-	Approx. weight	18.5 kg	Max. Flow	3440 m³/h		
Motor							
Power	0,25 kW	RPM	1400	I max. (400V)	0,84 A	Size	71
Approx. weight	6.5 kg	Efficiency (%)	55 %	FP	0.65		

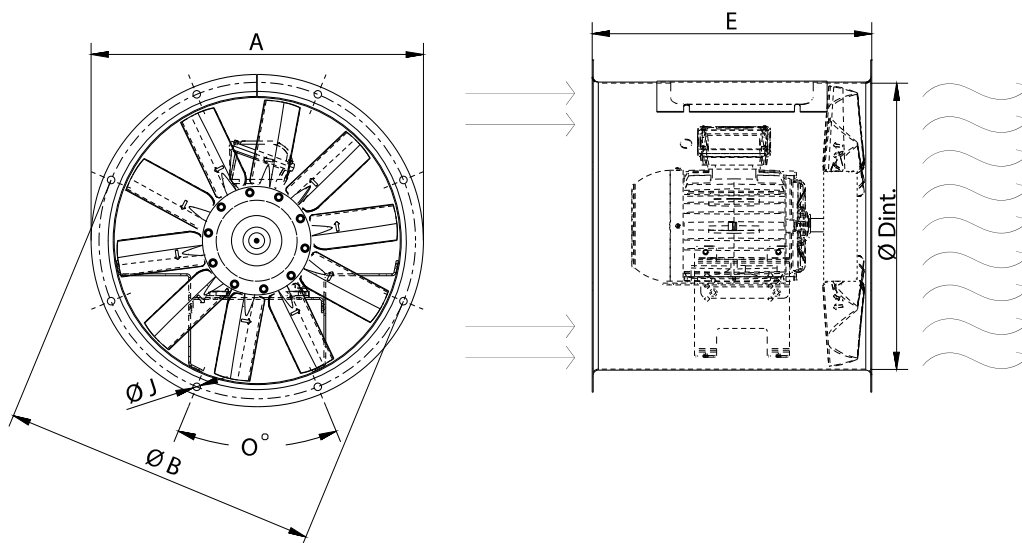
ACOUSTIC DATA (INLET)



Sound power	
63 Hz	41
125 Hz	50
250 Hz	56
500 Hz	60
1000 Hz	63
2000 Hz	64
4000 Hz	64
8000 Hz	59
TOTAL	70

Sound pressure 3m Q=2	
63 Hz	23
125 Hz	32
250 Hz	39
500 Hz	43
1000 Hz	46
2000 Hz	46
4000 Hz	47
8000 Hz	41
TOTAL	52

DIMENSIONS



Dimensions (mm)

E	350	O	8x45°	ØA	434	ØB	395	ØD	365
ØJ	10								

WIRING DIAGRAM



ACCESSORIES



PROTECTION GUARD FOR LONG CASE AXIAL FANS
RP 35
REF: 960300100



CASE FANS MOUNTING SUPPORT
PO 35
REF: 960001653



CONNECTION FLANGE
AC 350
REF: 960003211



ANTI-VIBRATING FLANGE 400°/2H
BA-400 35
REF: 960002053



ANTI-VIBRATION JOINT
JE 45
REF: 300719201



CIRCULAR SILENCER
SIL-C 355/355
REF: 960355355



**CIRCULAR SILENCER
SIL-C 355/532
REF: 960355532**



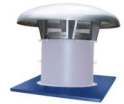
**CIRCULAR SILENCER
SIL-CN 355/355
REF: 961355355**



**CIRCULAR SILENCER
SIL-CN 355/710
REF: 961355071**



**TILT MOUNTING SUPPORT FOR HM FANS
PS 35
REF: 960110101**



**METALLIC ROOF KIT FOR CASE FANS
KIT TM 35
REF: KTM35**



**FREQUENCY SPEED CONTROLLER
SFC (GENERIC)**



**ANTI-VIBRATION SPRING BLOCK
AVS (GENERIC)**



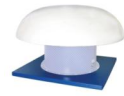
**CIRCULAR SILENCER
SIL-C 355/710
REF: 960355071**



**CIRCULAR SILENCER
SIL-CN 355/532
REF: 961355532**



**CIRCULAR-CIRCULAR ANTI-VIBRATION FLANGE
BAD 10 (Ø350)
REF: 960003460**



**ROOF KIT FOR CASE FANS
KIT TE 35
REF: KTE35**



**CASE TO PORTABLE CONVERSION KIT
KIT HI 35
REF: KHI35**



**ANTI-VIBRATION RUBBER BLOCK
AVR (GENERIC)**



**ATEX SWITCH
INT ATEX (GENERIC)**