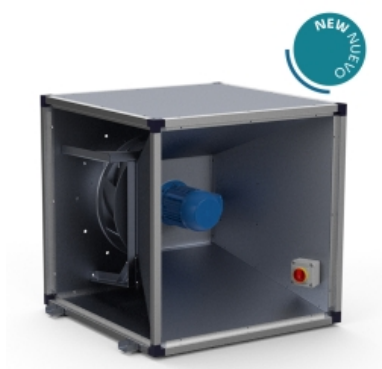


KENTALCOOK 315 M4 0,25kW (249314103Q)

GENERAL DATA



VENTILATION BOX WITH REACTION IMPELLER

MANUFACTURING CHARACTERISTICS:

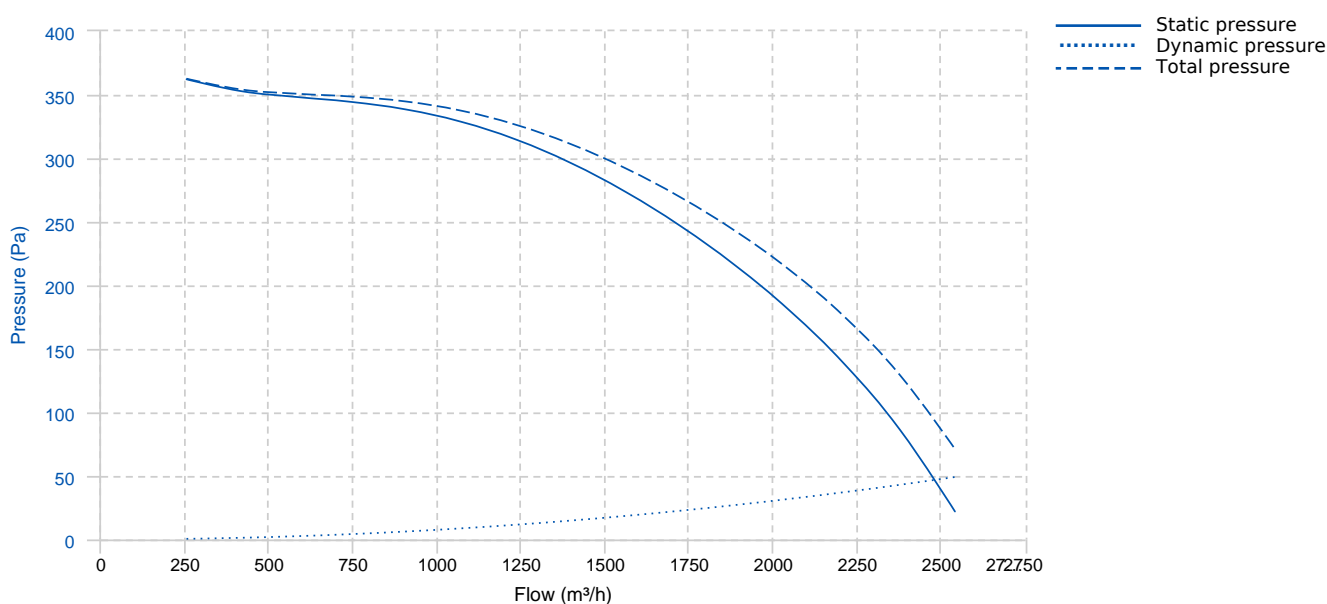
- Watertight ventilation box with very high efficiency and low noise level with 30 mm aluminum profile structure, nylon corners and galvanized steel sandwich panel with internal rock wool insulation 25 mm thick class A1 (non-combustible) and 90 kg/m³ density. All panels have a "fastening system" for easy assembly and disassembly whenever required, whether for cleaning, maintenance or panel exchange.
- Centrifugal fan with motor coupled directly to the coil type plug fan with motor outside the air flow
- Circular inlet to facilitate the connection of ducts. open outlet.
- Models with AC motor isolated from the air flow, which allows working stably with contaminated flow at temperatures higher than ambient. Standard asynchronous squirrel cage motor with IP-55 protection and Class F insulation. Standard voltages 230V 50Hz for single-phase and $\{ \{ 50 \} \} 230/400V$ and $400/690V 50Hz \{ \{ /50 \} \}$ for single-speed, 400V three-phase motors $\{ \{ 50 \} \} 50Hz \{ \{ /50 \} \}$ for the 2 speeds
- High-performance single-aspiration turbine with backward curved blades (reaction) with self-cleaning system built in steel. Statically and dynamically balanced at origin.
- With stainless steel drainage purge for escape route of the fluid load.
- Built-in safety switch.
- Interchangeable drive panels.
- Registration panel accessible by handle

APPLICATIONS:

Designed for 90° entry-exit installation, they are suitable for:

- Air renewal in buildings and industries.
- Smoke extraction.
- Kitchen extraction.
- Designed to deal with environments with oily load.
- Maximum continuous working temperature: three-phase 120°C.

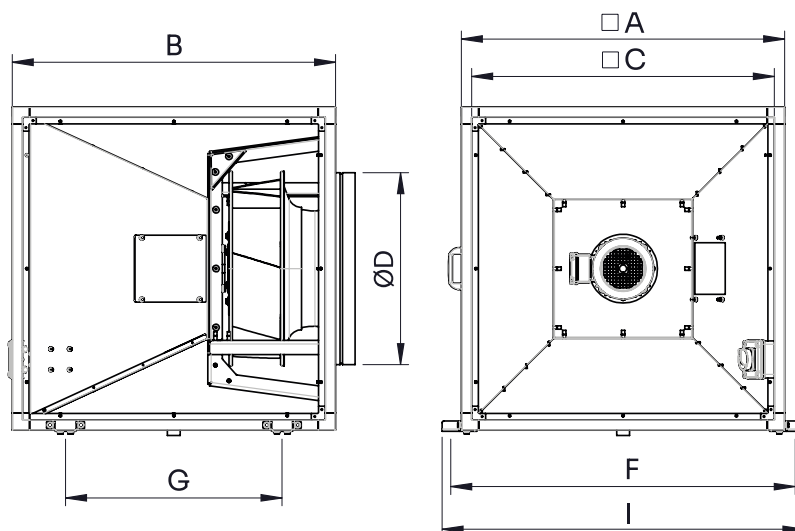
PERFORMANCE CURVE



TECHNICAL DATA

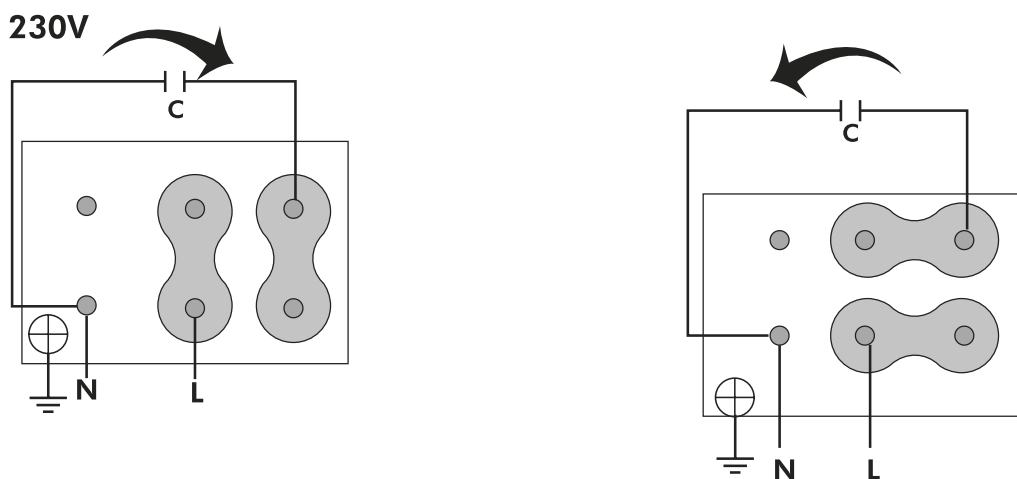
Fan							
RPM	1410	Approx. weight	37 kg	Max. Flow	2540 m ³ /h		
Motor							
Power	0,25 kW	RPM	1410	Capacitor	12µF 450V	I max. (230V)	1,6 A
Size	71	Approx. weight	6.5 kg	Efficiency (%)	68,5 %	FP	0,99

DIMENSIONS



Dimensions (mm)									
A	585	B	585	C	525	D	353	F	647
G	275	I	697						

WIRING DIAGRAM



ACCESSORIES



OUTLET BLIND COVER FOR KENTALBOX PLUS TIC KENTALBOX PLUS 315
REF: TICKBP315



OUTLET ROUND COVER FOR KENTALBOX PLUS TBIC KENTALBOX PLUS 315
REF: TBICKBP315



EXTERNAL BOX FILTER BOX FILTER 585x585x300
REF: BFKENBP315



**FILTER CELLS WITH FIBERPLAST FRAME
FILT ISO Coarse \geq 60% (475x261.5x48)
PREFILTRO MARCO FIBERPLAST**
REF: FILTG04048



**HIGH EFFICIENCY, RIGID AND COMPACT FILTER
FILT ePM1 \geq 50% (475x261.5x48) ALTA EFIC.
PANEL MINIPLEGADO**
REF: FILTF07063



**HIGH EFFICIENCY, RIGID AND COMPACT FILTER
FILT ePM1 \geq 80% (475x261.5x48) ALTA EFIC.
PANEL MINIPLEGADO**
REF: FILTF09051



WEATHER PROTECTIVE ROOF FOR KENTALBOX PLUS TEJ KENTALBOX PLUS 315
REF: TEJKBP315