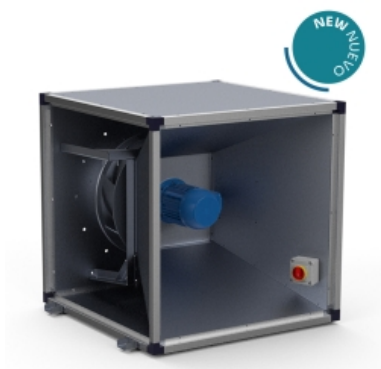


KENTALCOOK 400 T4/T8 0,75/0,12kW (2494041062VQ)

GENERAL DATA



VENTILATION BOX WITH REACTION IMPELLER

MANUFACTURING CHARACTERISTICS:

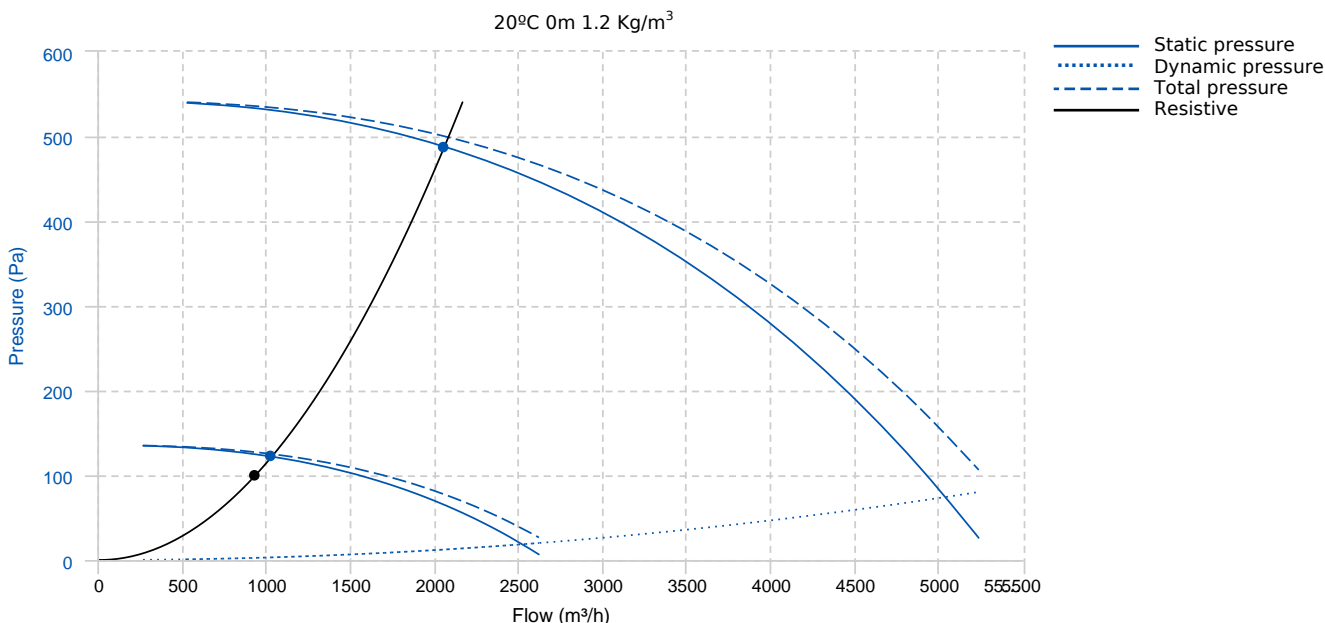
- Watertight ventilation box with very high efficiency and low noise level with 30 mm aluminum profile structure, nylon corners and galvanized steel sandwich panel with internal rock wool insulation 25 mm thick class A1 (non-combustible) and 90 kg/m³ density. All panels have a "fastening system" for easy assembly and disassembly whenever required, whether for cleaning, maintenance or panel exchange.
- Centrifugal fan with motor coupled directly to the coil type plug fan with motor outside the air flow
- Circular inlet to facilitate the connection of ducts. open outlet.
- Models with AC motor isolated from the air flow, which allows working stably with contaminated flow at temperatures higher than ambient. Standard asynchronous squirrel cage motor with IP-55 protection and Class F insulation. Standard voltages 230V 50Hz for single-phase and $\{ \{ 50 \} \} 230/400V$ and $400/690V50Hz \{ \{ /50 \} \}$ for single-speed, 400V three-phase motors $\{ \{ 50 \} \} 50Hz \{ \{ /50 \} \}$ for the 2 speeds
- High-performance single-aspiration turbine with backward curved blades (reaction) with self-cleaning system built in steel. Statically and dynamically balanced at origin.
- With stainless steel drainage purge for escape route of the fluid load.
- Built-in safety switch.
- Interchangeable drive panels.
- Registration panel accessible by handle

APPLICATIONS:

Designed for 90° entry-exit installation, they are suitable for:

- Air renewal in buildings and industries.
- Smoke extraction.
- Kitchen extraction.
- Designed to deal with environments with oily load.
- Maximum continuous working temperature: three-phase 120°C.

PERFORMANCE CURVE



Design point

Flow (m³/h)

930

Pressure (Pa)

100

Service point

	8p	4p		8p	4p
Speed	8p	4p	Pt (Pa)	125.07	500.28
T.max (°C)	60	60	Speed (m/s)	2.27	4.54
Q (m³/h)	1027.12	2054.25	Security coefficient	14.79	1.85
Ps (Pa)	121.98	487.91	Mechanical total efficiency	70.33	70.33
Pd (Pa)	3.09	12.37	Pw.mec (kW)	0.05	0.41

TECHNICAL DATA

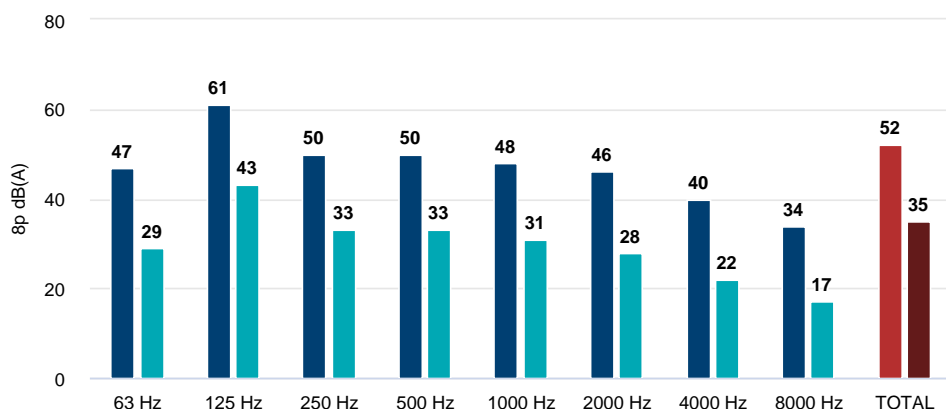
Fan

Approx. weight	59 kg	Max. Flow	5240 m³/h
----------------	-------	-----------	-----------

Motor

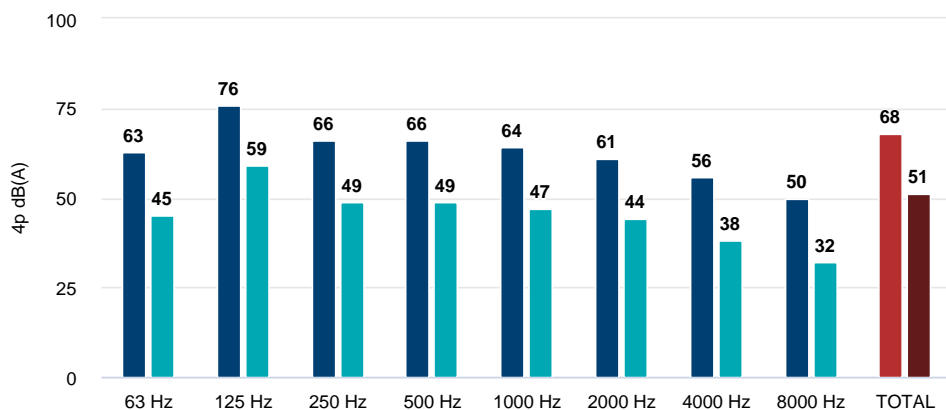
Power	0,75/0,12 kW	RPM	1400/710	I max. (400V)	2,03/0,68 A	Size	80M
Approx. weight	10 kg	Efficiency (%)	73/58 %	FP	0,75/0,48		

ACOUSTIC DATA ()



Sound power

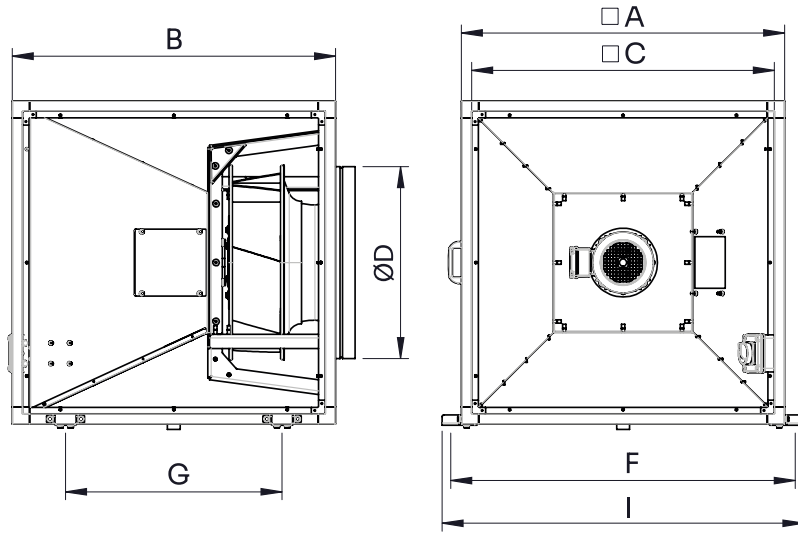
	8p	4p
63 Hz	47	63
125 Hz	61	76
250 Hz	50	66
500 Hz	50	66
1000 Hz	48	64
2000 Hz	46	61
4000 Hz	40	56
8000 Hz	34	50
TOTAL	52	68



Sound pressure 3m Q=2

	8p	4p
63 Hz	29	45
125 Hz	43	59
250 Hz	33	49
500 Hz	33	49
1000 Hz	31	47
2000 Hz	28	44
4000 Hz	22	38
8000 Hz	17	32
TOTAL	35	51

DIMENSIONS

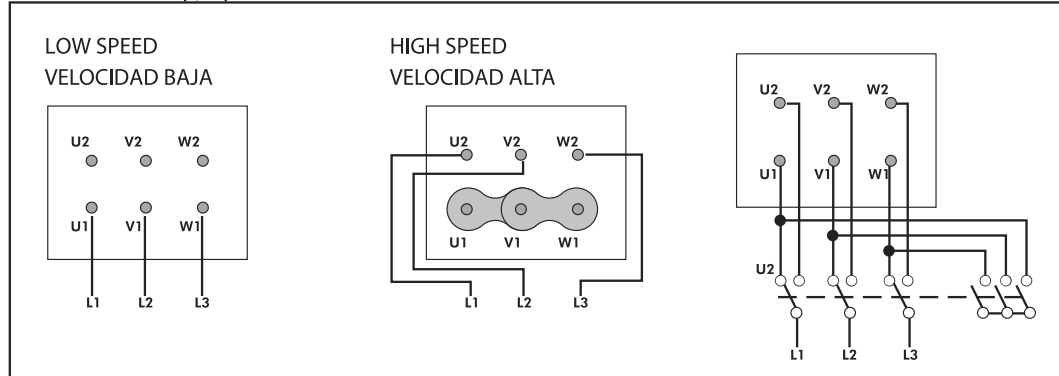


Dimensions (mm)

A	730	B	730	C	670	D	448	F	792
G	420	I	842						

WIRING DIAGRAM

400V DAHLANDER (Y,YY)



ACCESSORIES



**OUTLET BLIND COVER FOR KENTALBOX PLUS
TIC KENTALBOX PLUS 400**
REF: TICKBP400



**OUTLET ROUND COVER FOR KENTALBOX PLUS
TBIC KENTALBOX PLUS 400**
REF: TBICKBP400



EXTERNAL BOX FILTER
BOX FILTER 730x730x300
REF: BFKENBP400



FILTER CELLS WITH FIBERPLAST FRAME
FILT ISO Coarse \geq 60% (620x334x48) PREFILTRO
MARCO FIBERPLAST
REF: FILTG04050



HIGH EFFICIENCY, RIGID AND COMPACT FILTER
FILT ePM1 \geq 50% (620x334x48) ALTA EFIC. PANEL
MINIPLGADO
REF: FILTF07065



HIGH EFFICIENCY, RIGID AND COMPACT FILTER
FILT ePM1 \geq 80% (620x334x48) ALTA EFIC. PANEL
MINIPLGADO
REF: FILTF09053



WEATHER PROTECTIVE ROOF FOR KENTALBOX
PLUS
TEJ KENTALBOX PLUS 400
REF: TEJKB400