

KENTALROOF 400 T4/T8 0,75/0,12kW (27940480PA2V)

GENERAL DATA



ROOF FAN, ABS COWL 400°C/2h

MANUFACTURING FEATURES:

- ABS protection cowl easily removable for motor and impeller maintenance thanks to the integrated folding system. The ABS hat is characterized by its toughness, impact resistance and ability to withstand extreme temperatures. 100% of the ABS used in the hat is recycled.
- Structure in anticorrosive galvanized steel and support frame for adaptation to the roof with anti-bird protection grid.
- High-performance, backward-curved blade (reaction) turbines with self-cleaning system, built in galvanized steel treated with anti-corrosion.
- Standard asynchronous squirrel cage motor with IP-55 protection and Class F insulation. Standard voltages of 230V50Hz for single phase motors, 230/400V50Hz & 400/690V 50Hz for three-phase 1 speed motors and 400V50Hz for 2 speed motors.

APPLICATIONS

Designed for deck or roof mounting, they are indicated for:

- Smoke extraction.
- Smoke extraction in case of fire while the engine is outside the risk area.
- Air renewal in all types of buildings and industries.
- Industrial and professional kitchen hoods.
- Maximum continuous working temperature: transported air 80°C, ambient 60°C to -25°C in three-phase motors.

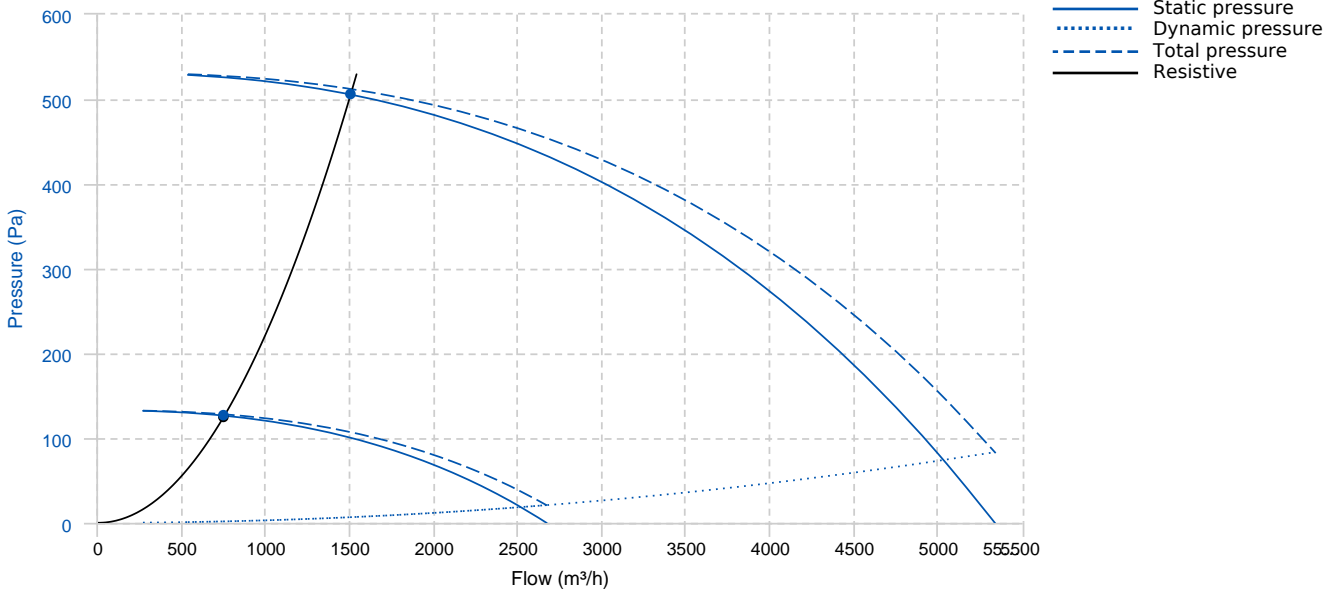
UNDER REQUEST

- Special voltages.

*Available in June

PERFORMANCE CURVE

20°C 0m 1.2 Kg/m³



Design point

Flow (m ³ /h)	750	Pressure (Pa)	126
--------------------------	-----	---------------	-----

Service point

	8p	4p		8p	4p
T.max (°C)	60	60	Speed (m/s)	1.66	3.32
Q (m ³ /h)	751.15	1502.29	Security coefficient	17.26	2.16
Ps (Pa)	126.39	505.54	Mechanical total efficiency	59	59
Pd (Pa)	1.65	6.61	Pw.mec (kW)	0.04	0.35
Pt (Pa)	128.04	512.16			

TECHNICAL DATA

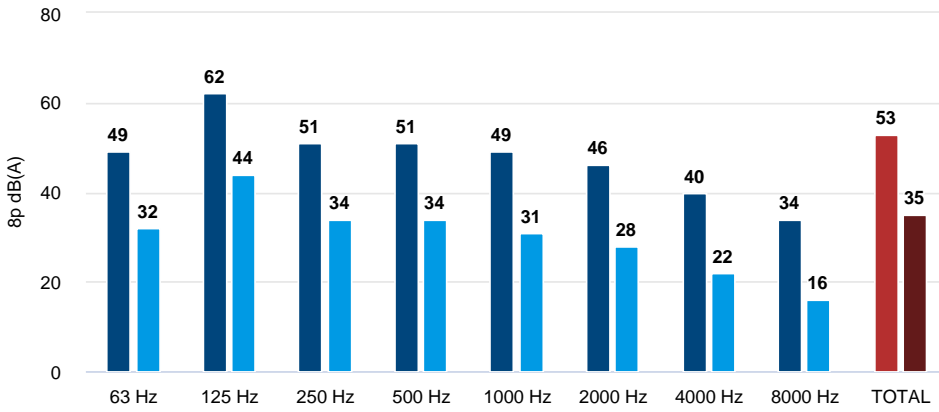
Fan

Approx. weight	45 kg	Max. Flow	5340 m ³ /h
----------------	-------	-----------	------------------------

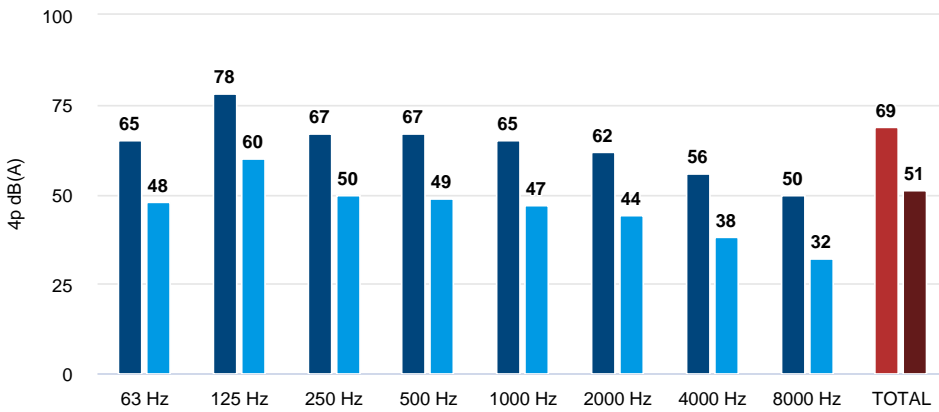
Motor

Power	0,75/0,12 kW	RPM	1400/710	I max. (400V)	2,03/0,68 A	Size	80M
Approx. weight	10 kg	Efficiency (%)	73/58 %	FP	0,75/0,48		

ACOUSTIC DATA

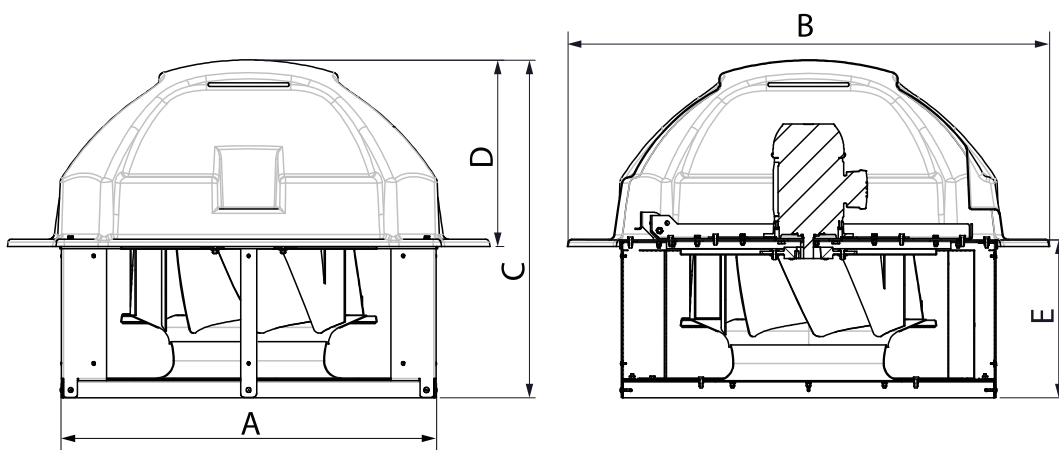


Sound power		
	8p	4p
63 Hz	49	65
125 Hz	62	78
250 Hz	51	67
500 Hz	51	67
1000 Hz	49	65
2000 Hz	46	62
4000 Hz	40	56
8000 Hz	34	50
TOTAL	53	69



Sound pressure 3m (rad) Q=2		
	8p	4p
63 Hz	32	48
125 Hz	44	60
250 Hz	34	50
500 Hz	34	49
1000 Hz	31	47
2000 Hz	28	44
4000 Hz	22	38
8000 Hz	16	32
TOTAL	35	51

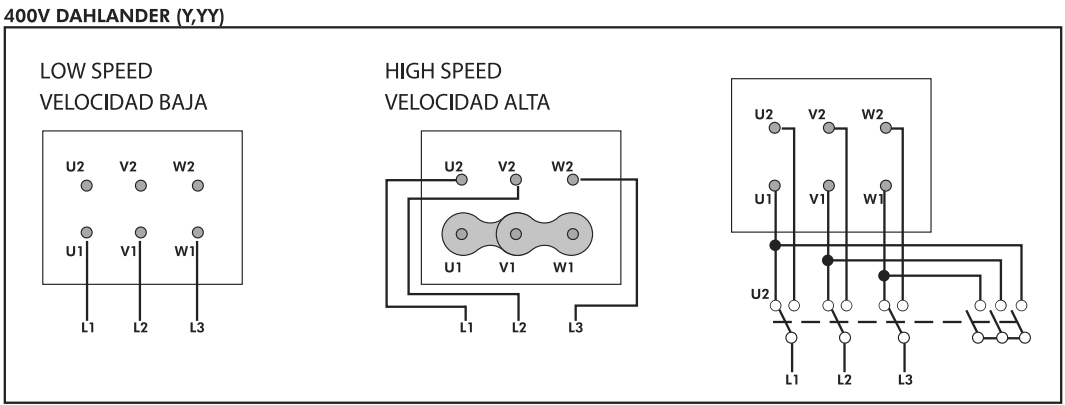
DIMENSIONS



Dimensions (mm)

A (int)	662	B	865.3	C	647.5	D	365	E	295.5
---------	-----	---	-------	---	-------	---	-----	---	-------

WIRING DIAGRAM



ACCESSORIES



**CONNECTION FLANGE
AC 400**
REF: 960003212



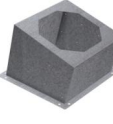
**CIRCULAR SILENCER
SIL-C 400/600**
REF: 960040060



**CIRCULAR SILENCER
SIL-CN 400/400**
REF: 961040040



**CIRCULAR SILENCER
SIL-CN 400/800**
REF: 961040080



**INCLINED ROOF FAN SUPPORT
BTI 640**
REF: 50870640XX



**CIRCULAR SILENCER
SIL-C 400/400**
REF: 960040040



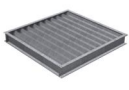
**CIRCULAR SILENCER
SIL-C 400/800**
REF: 960040080



**CIRCULAR SILENCER
SIL-CN 400/600**
REF: 961040060



**CIRCULAR-CIRCULAR ANTI-VIBRATION FLANGE
BAD 11**
REF: 960003461



**DEPRESSION PLACEMENT) DUMPER (HORIZONTAL
CMP-HHT 500x510**
REF: CMPHHT5051



KENTALROOF VERTICAL DISCHARGE
KV KENTALROOF 400
REF: KVKNTR400