

SB-3 6040 EEC (240310242)

GENERAL DATA



CENTRIFUGAL FAN IN LOW PROFILE BOX WITH RECTANGULAR FLANGES, WITH EXTERNAL ROTOR EC MOTOR

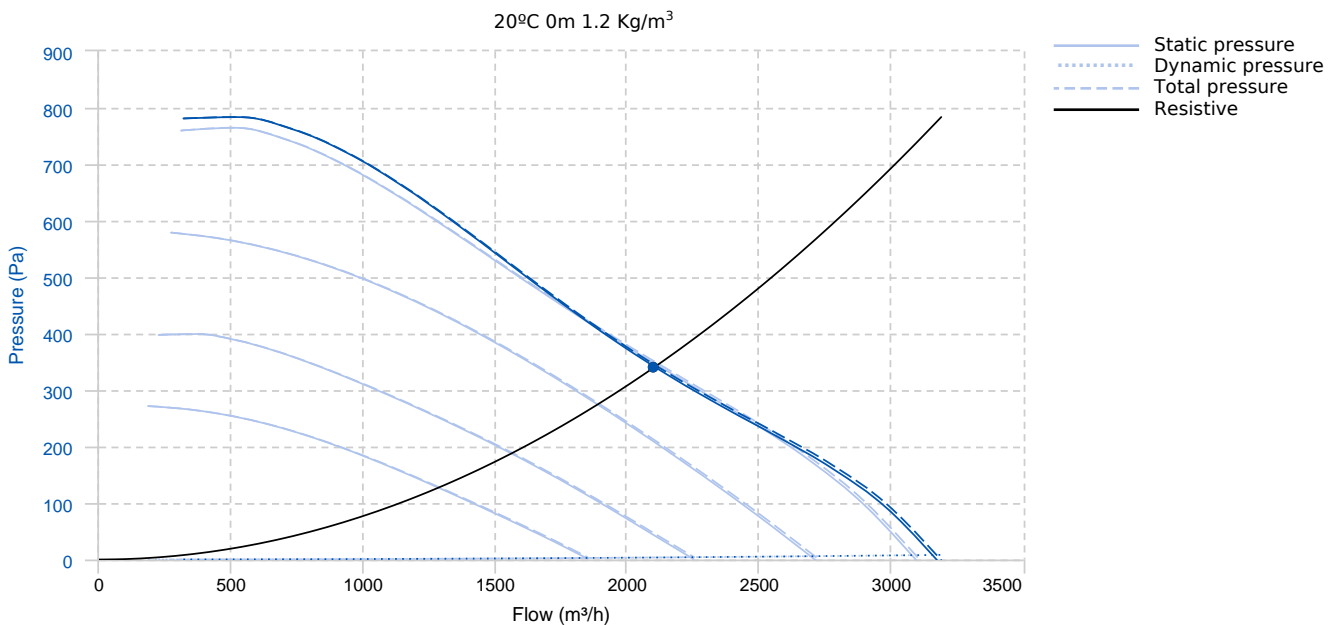
MANUFACTURING FEATURES

Inline ventilation box made of galvanized steel with rectangular connection flanges. Self-cleaning impeller with back curved (backward) blades of high performance and single inlet, direct driven. Dynamically balanced to minimize noise and vibration. Polyamide reinforced impeller for models 3015 and 4020 and aluminum plate for the rest. High efficiency, low noise external rotor EC motor. Speed control through a 0-10V or PWM signal. Single-phase 230V 50/60Hz power supply for models 3015 to 6040 and three-phase 400V 50/60Hz for sizes 7050 and 8060. IP44 motor and class B insulation.

APPLICATIONS

Designed for duct installation, they are indicated for:
 -Air renovations in bathrooms and small rooms.
 -Perfect for false ceiling installation.
 Working temperature range from -20°C to 60°C.

PERFORMANCE CURVE



Design point

Flow (m ³ /h)	2100	Pressure (Pa)	340
--------------------------	------	---------------	-----

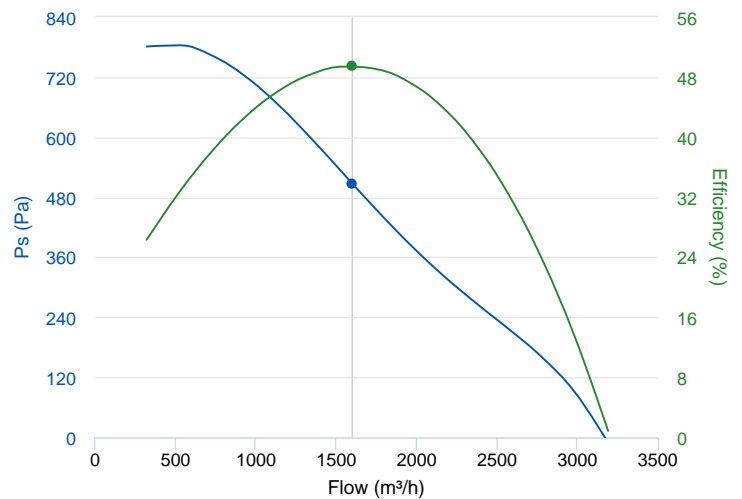
Service point							
Speed	2350rpm (10V)	T.max (°C)	60	Q (m³/h)	2103.46	Ps (Pa)	341.12
Pd (Pa)	3.56	Pt (Pa)	344.68	Speed (m/s)	2.43	Pabs (kW) 1.2 kg/m³	0.47
SFP (W/l/s) 1.2 kg/m³	0.8						

TECHNICAL DATA

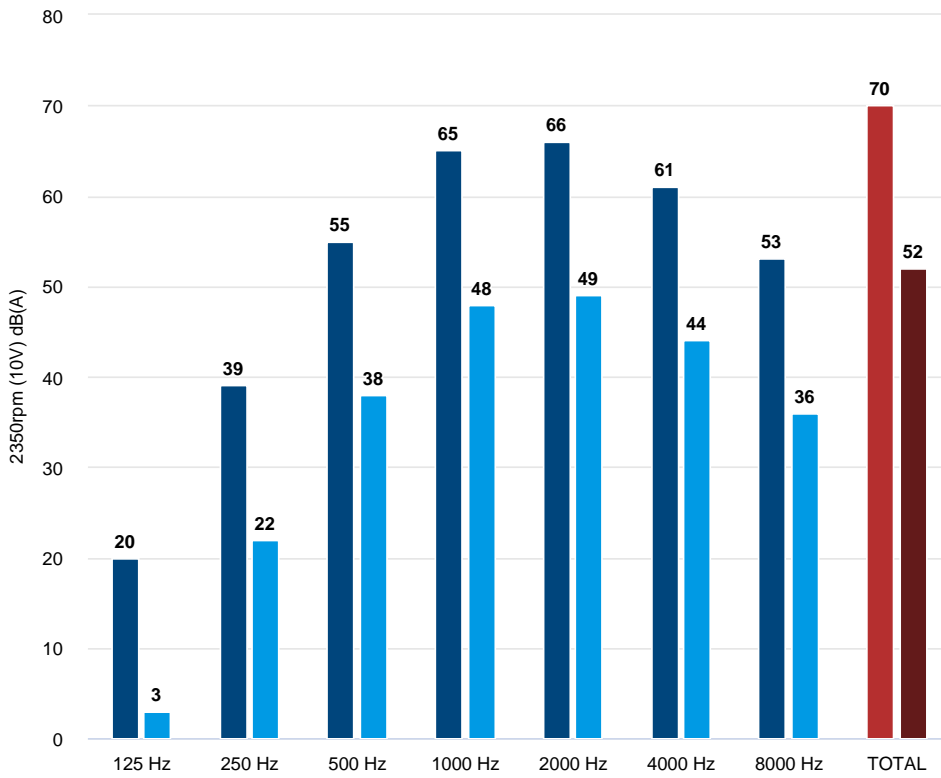
Fan							
RPM	10	Approx. weight	20.5 kg	Max. Flow	3190 m³/h		
Motor							
Power	0.36 kW	RPM	2350	I max. (230V)	1,7 A	Approx. weight	5 kg

ERP DATA

Fan data sheet		
Fan type	Unit for non-residential ventilation (LOT 6)	
Typology	Static	
reports.other	Outlet and Inlet free discharge	
Type of driver	None	
Motor power (kW)	0.36	
	Fan values	ERP Requirements 2018
Max. efficiency (%)	49.43	37.33
Effic. Heat recovery (%)	-	
Pabs (kW)	0.47	
Flow (m³/h)	1599.45	
Static pressure (Pa)	507.3	
Speed (m/s)	1.85	
SFP (W/m3/s)	1058.92	



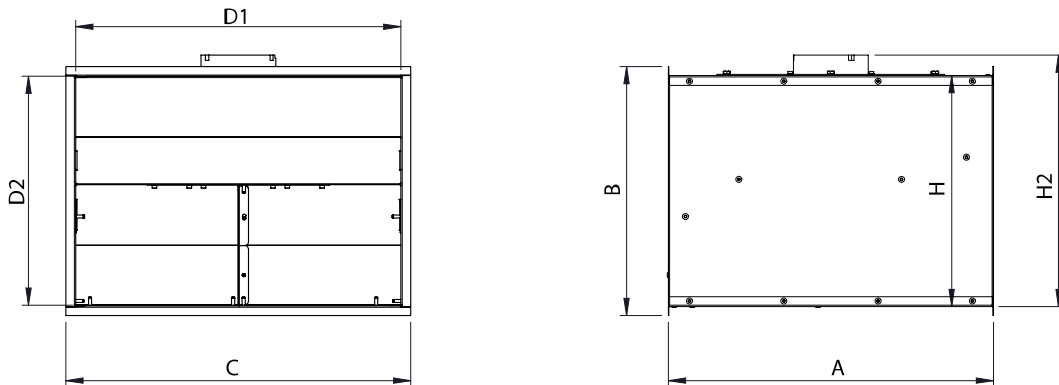
ACOUSTIC DATA



Sound power	
125 Hz	20
250 Hz	39
500 Hz	55
1000 Hz	65
2000 Hz	66
4000 Hz	61
8000 Hz	53
TOTAL	70

Sound pressure 3m (rad) Q=2	
125 Hz	3
250 Hz	22
500 Hz	38
1000 Hz	48
2000 Hz	49
4000 Hz	44
8000 Hz	36
TOTAL	52

DIMENSIONS




Dimensions (mm)

A	610	B	430	C	630	D1	600	D2	400
H	405	H2	447						

WIRING DIAGRAM

Nº	Signal Señal	Colour Color	Specification Especificación
1	L	Brown Marrón	AC 220V-50/60 Hz
2	N	Blue Azul	AC 220V-50/60 Hz
3	Pe	Yellow-Green Amarillo-Verde	

Nº	Signal Señal	Colour Color	Specification Especificación
1	GND	Blue Azul	
2	Vsp	Yellow Amarillo	0-10 V/PWM
3	Vcc	Red Rojo	DC 10V
4	FG	White Blanco	12 Pulse/R

ACCESSORIES



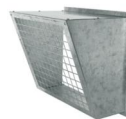
**SAFETY SWITCH
INT 25 3P A**
REF: INT253PA



**SPEED CONTROLLER FOR EEC MOTOR
REGC**
REF: FX263300



**WEATHER PROTECTIVE ROOF FOR SB-3 EEC &
SBC-3 EEC & VARIANTS**
TEJ SB-3 6040
REF: TEJSB36040



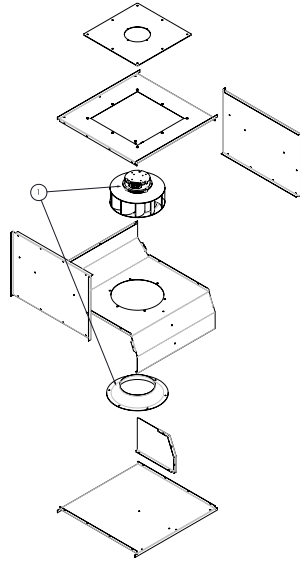
**OUTDOOR FLANGE WITH BIRD GUARD FOR SB-3
EEC**
VIS SB-3 6040
REF: VISSB3F6040



**SPEED CONTROLLER WITH SAFETY SWITCH FOR
EEC MOTOR**
PMR 25A
REF: PMREEC



SPARE PARTS



	Code	Model	Qty
1	R-241353017	MOTOR-FAN+INLET CONE Ø315 230V 50/60Hz	x1