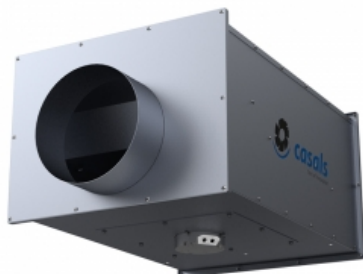


SBC-3 160 EEC (SBC3160EC)

GENERAL DATA



CENTRIFUGAL FAN IN LOW PROFILE BOX WITH CIRCULAR FLANGES, WITH EXTERNAL ROTOR EC MOTOR

MANUFACTURING FEATURES

Inline ventilation box made of galvanized steel with circular connection flanges. Self-cleaning impeller with back curved (backward) blades of high performance and single inlet, direct driven. Dynamically balanced to minimize noise and vibrations. Polyamide reinforced impeller for models 125, 150 and 160 and aluminum plate for the rest. High efficiency (IE4 for three phase motors and IE5 for single motors), low noise external rotor EC motor. Speed control through a 0-10V or PWM signal. Single-phase 230V 50/60Hz power supply for models 125 to 355 and three-phase 400V 50 / 60Hz for sizes 400 to 560. IP44 motor and class B insulation.

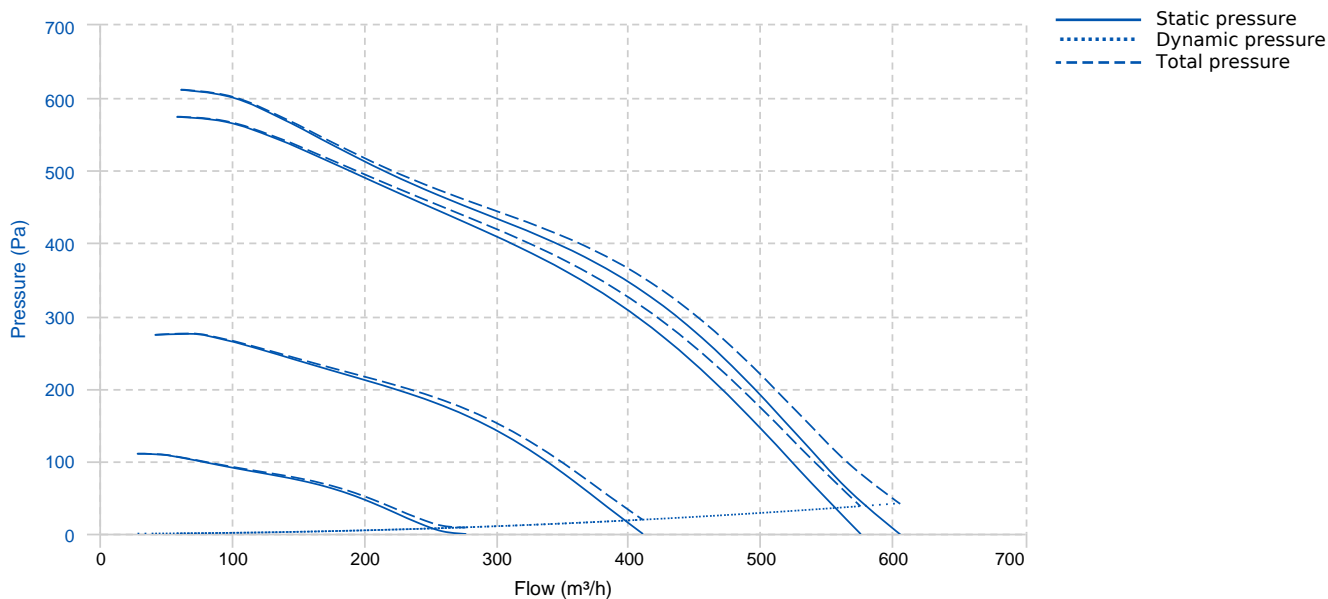
APPLICATIONS

Designed for duct installation, they are indicated for:

- Air renovations in bathrooms and small rooms.
- Perfect for false ceiling installation.

Working temperature range from -20°C to 60°C.

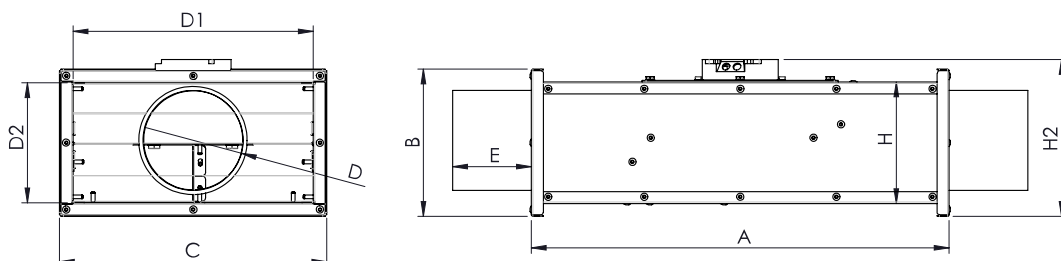
PERFORMANCE CURVE



TECHNICAL DATA

Fan							
RPM	3570	Approx. weight	9.5 kg	Max. Flow	605 m³/h		
Motor							
Power	0,09 kW	RPM	3570	I max. (230V)	0,6 A	Approx. weight	2.6 kg

DIMENSIONS

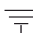


Dimensions (mm)

A	622	B	234	C	434	D	160	D1	400
D2	200	E	98	H	204	H2	245.5		

WIRING DIAGRAM

Nº	Signal Señal	Colour Color	Specification Especificación
1	L	Brown Marrón	AC 220V/50Hz
2	N	Blue Azul	AC 220V/50Hz
3	Pe	Yellow-Green Amarillo-Verde	

Nº	Signal Señal	Colour Color	Specification Especificación
1	GND	Blue Azul	
2	Vsp	Yellow Amarillo	0-10V/PWM
3	Vcc	Red Rojo	DC 10V
4	FG	White Blanco	1 Pulse/R

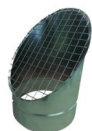
ACCESSORIES



SAFETY SWITCH
INT 25 3P A
REF: INT253PA



SPEED CONTROLLER FOR EEC MOTOR
REGC
REF: FX263300



CIRCULAR OUTDOOR FLANGE WITH BIRD GUARD
VISC Ø160
REF: VISC160

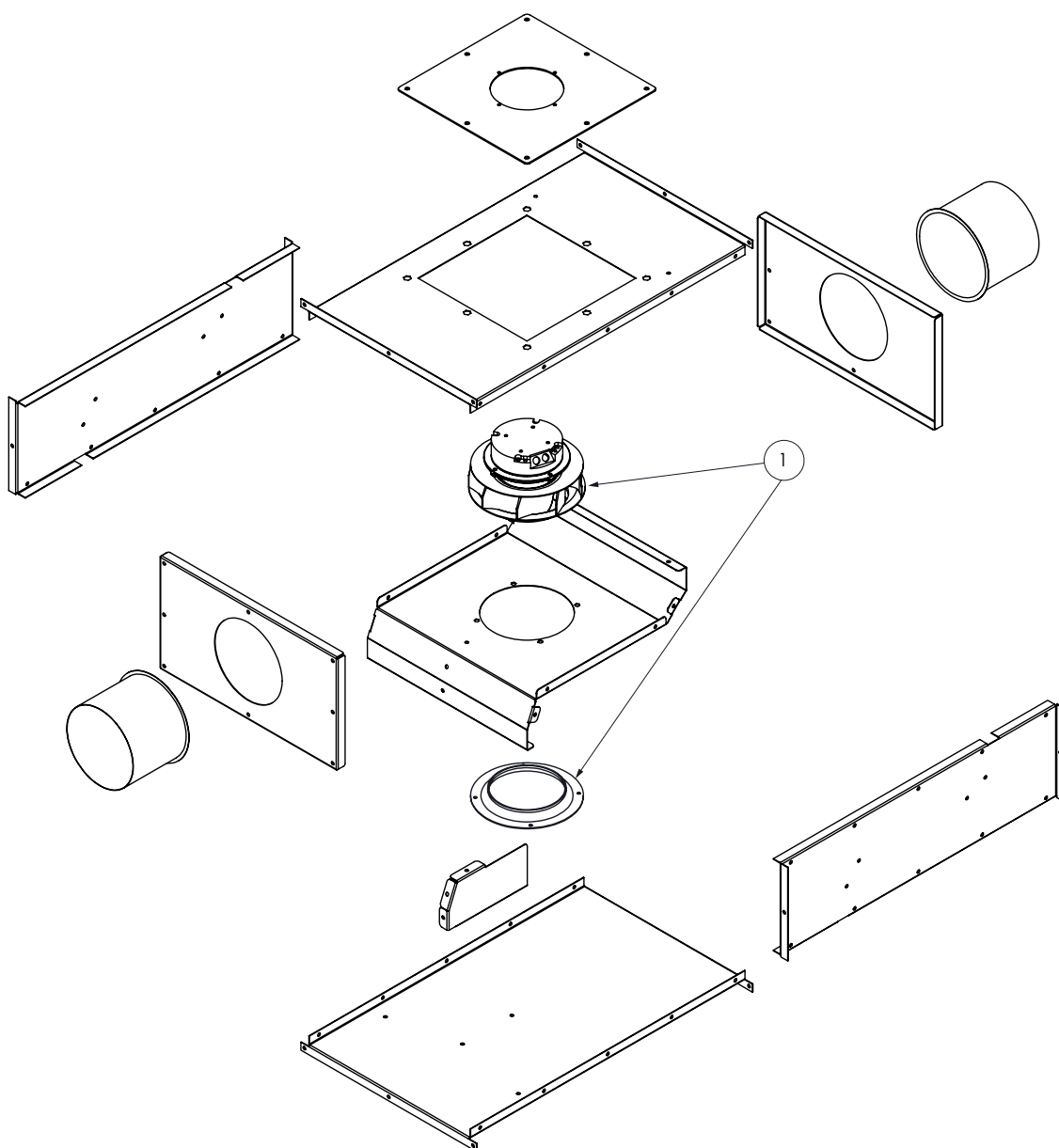


WEATHER PROTECTIVE ROOF FOR SB-3 EEC & SBC-3 EEC & VARIANTS
TEJ SB-3 4020
REF: TEJSB34020



SPEED CONTROLLER WITH SAFETY SWITCH FOR EEC MOTOR
PMR 25A
REF: PMREEC

SPARE PARTS





	Code	Model	Qty
1	R-241203017	MOTOR-FAN+INLET CONE Ø190 230V 50/60Hz	x1