

## Series E™ CenTraVac™ CVHH/CDHH Water-Cooled Chillers



## Series E™ CenTraVac™ CVHH/CDHH Water-Cooled Chillers



**Cooling capacity: 3000-14000 kW**

**Heating capacity: -----**

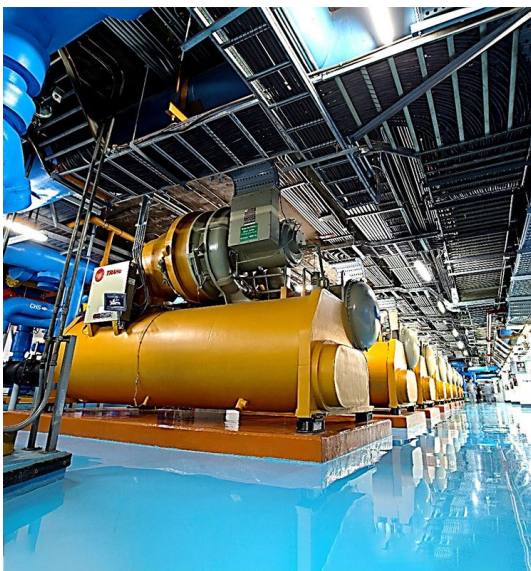
- Direct drive multistage compressors
- Semi-hermetic compressor design
- Rapid restart after power failure
- Economizer
- Tracer AdaptiView™ Controls



## Highest Efficiency

Proven design of compressor in conjunction with use of low pressure refrigerant R1233zd(E) and standard fitted economizer provide market-leading efficiencies:

- Exceeding 10 percent more efficient than any other centrifugal chiller design
  - Direct drive compressor provides 2 to 3 percent better efficiency
  - Multi-stage design with integrated flash economizer drives 5 to 7 percent better cycle efficiency
- The industry's most efficient, low pressure, next-generation, low-GWP refrigerant.
- Duplex™ chiller design utilizing series counterflow arrangement provides the industry's highest efficiency for large tonnage applications



## Most reliable

For the last 80 years, Trane has been building centrifugal chillers with design fundamentals and proven technology. Trane centrifugal compressors achieve the industry's highest design reliability rating of 99.7 percent:

- Unmatched direct drive compressor reliability through simplicity of design and fewer moving parts
- Semi-hermetically sealed motors operate in a cool, clean environment to extend the life of the chiller
- Tracer AdaptiView™ controller with patented algorithms anticipate and correct situations to keep the chiller online
- Extensive factory testing available to verify operation at customer-defined conditions



## Environmental Stewardship

- Near-zero global warming potential with R-1233zd(E), a next-generation, low-GWP refrigerant that is one of the few non-flammable olefin options available today
- Low pressure, leak-tight design keeps refrigerant inside the chiller
- Patented EarthWise™ purge auto-regeneration cycle reclaims refrigerant for return to the refrigerant cycle
- Energy saving options reduce water and heating plant consumption: free cooling, thermal storage, heat recovery, heat pump and Adaptive Frequency™ drives

## Range description

- As with all CenTraVac™ chillers, selection options ensure units are built to customer's specific requirements. From energy saving options to the enhanced electrical package and a variety of low and medium voltage options, a Trane chiller will be customized to your needs.
- CVHH Single circuit / Single compressor — CDHH Double circuit / Double compressor  
Direct drive multistage compressors

## Technical specifications

<b>Cooling capacity</b>	3000-14000 kW
<b>Heating capacity</b>	-----
<b>Eurovent certification</b>	
<b>ErP Certification</b>	
<b>Refrigerants</b>	R1233zd
<b>Operating mode</b>	Cooling only
<b>Energy saving</b>	Heat recovery   Free cooling

**Compressor**

Centrifugal

## Improve Operations

Technology is continuously evolving and Trane Engineering is ahead of the curve in bringing innovation into product development. Our sustainable solutions deliver enhancements to the Trane installed base to make your chillers and heat pumps even "better than before". That's Trane Building Advantage - TBA.

## Trane Rental Services

Cooling and heating are services, not products. A process or a building does not need a chiller or a boiler sitting on a roof, but a reliable and efficiency supply of cold or hot water, cold or warm air. This is the essence of what we do at Trane Rental Services. Let us take care of it for you.



**Read more <https://trane.eu/rental>**

Trane has a policy of continuous product and product data improvement and reserves the right to change design and specifications without notice.



Trane – by Trane Technologies (NYSE: TT), a global climate innovator – creates comfortable, energy efficient indoor environments through a broad portfolio of heating, ventilating and air conditioning systems and controls, services, parts and supply. For more information, please visit [trane.eu](https://trane.eu) or [tranetechnologies.com](https://tranetechnologies.com).