

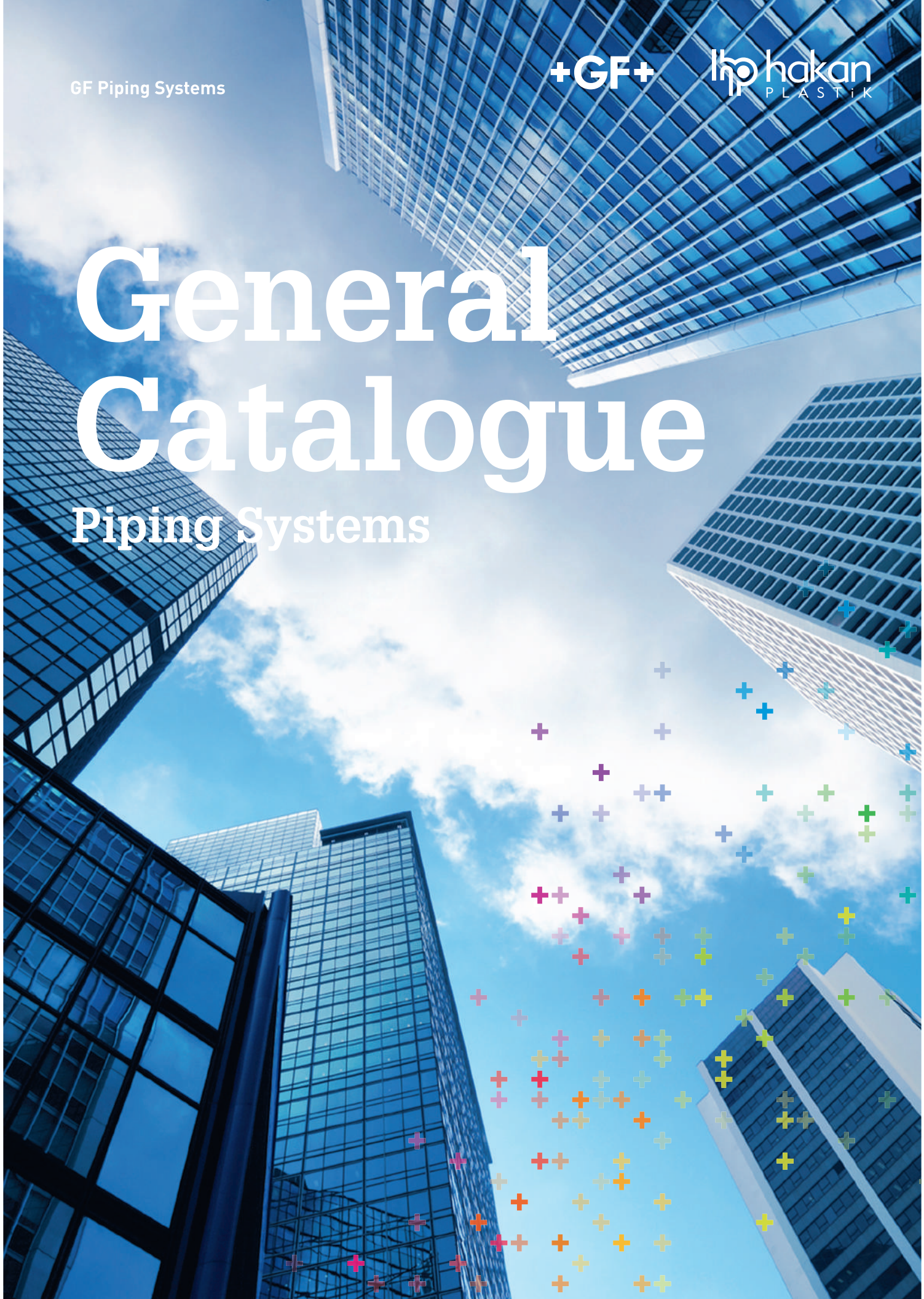
GF Piping Systems

+GF+

hakan  
PLASTIK

# General Catalogue

## Piping Systems



+GF+

hp  
hakan  
PLASTİK

# PVC-U

## Pressurized Potable Water Piping Systems

Demonstrates excellent resistant to aggressive environments that occur as a result of both natural and industrial operations.

- They are resistant to almost all chemical or electrochemical corrosion types in the nature.
- Adhesion and socket type connection options are available.
- Hygienic, does not cause bacteria and odor.
- Fire resistant, ensures safety in both domestic and industrial installations.
- PVC-U pipes made of tasteless and odor-free material remain neutral and inert for all liquids transported.
- They are produced in two types:
  - Pipes with Solvent Cementing
  - Pipes with Rubber Gasket (Push-Fit) Socket
- Pipes with diameter d20-d110 mm are made as sement adhesion socket while pipes with diameter d63-500 are made as rubber gasket (Push-Fit) socket.
- Fast and easy installation.
- Minimum maintenance costs.
- Prevents residues thanks to its smooth and even internal surface.
- Ensures additional safety when using in both domestic and industrial power installations as they are fire resistant.
- Produced in accordance with TS EN 1452-2 standards.

### + Fields of Application

- Pressurized water networks, supply of urban drinking water
- Pipelines for ventilation systems, swimming pool facilities
- Transfer of acids, alkalis and harmful chemicals
- Pumped waste water networks
- Industrially-treated liquids and industrial waste discharge
- Network and cable system installation
- Supply of water in agricultural irrigation and rural areas.

### + Technical Properties

Diameters [mm]	d20 - d500 mm
Pressure Classes	PN6 - PN8 - PN10 - PN12,5 - PN16 - PN20
Operating Temperature Range	0°C - 60°C
Connection Type	Rubber gasket (Push-Fit) socket and solvent cementing
Color	Black
Approvals and Certificates	<b>Turkey:</b> TSE, <b>Russia:</b> GOST, <b>Ukraine:</b> SEPRO, HYGIENE



# PVC Pressurized Potable Water Pipes



Nominal External Diameter	Pipe Ranges (S)						
	Nominal wall thickness						
	S20	S16	S12,5	S10	S8	S6,3	S5
	(SDR 41)	(SDR 33)	(SDR 26)	(SDR 21)	(SDR 17)	SDR (13,6)	SDR (11)
Nominal pressures PN, determined based on service (design) coefficient as C=2,5							
d <sub>n</sub>	PN6	PN8	PN10	PN12,5	PN16	PN20	PN25
20	-	-	-	-	1,5	1,9	-
25	-	-	-	-	1,5	1,9	2,3
32	-	-	1,5	1,6	1,9	2,4	2,9
40	-	1,5	1,6	1,9	2,4	3	3,7
50	-	1,6	2,0	2,4	3	3,7	4,6
63	-	2,0	2,5	3	3,8	4,7	5,8
75	-	2,3	2,9	3,6	4,5	5,6	6,8
90	-	2,8	3,5	4,3	5,4	6,7	8,2
Nominal pressures <sup>a</sup> , PN, determined based on service (design) coefficient as C=2,0							
d <sub>n</sub>	PN6	PN8	PN10	PN12,5	PN16	PN20	PN25
110	2,7	3,4	4,2	5,3	6,6	8,1	10,0
125	3,1	3,9	4,8	6,0	7,4	9,2	11,4
140	3,5	4,3	5,4	6,7	8,3	10,3	12,7
160	4	4,9	6,2	7,7	9,5	11,8	14,6
180	4,4	5,5	6,9	8,6	10,7	13,3	16,4
200	4,9	6,2	7,7	9,6	11,9	14,7	18,2
225	5,5	6,9	8,6	10,8	13,4	16,6	-
250	6,2	7,7	9,6	11,9	14,8	18,4	-
280	6,9	8,6	10,7	13,4	16,6	20,0	-
315	7,7	9,7	12,1	15,0	18,7	23,2	-
355	8,7	10,9	13,6	16,9	21,1	26,1	-
400	9,8	12,3	15,3	19,1	23,7	29,4	-
450	11	13,8	17,2	21,5	26,7	33,1	-
500	12,3	15,3	19,1	23,9	29,7	36,8	-

<sup>a</sup> The upper pressure class, PN, should be selected to take total service (design) coefficient as 2,5 (instead of 2,0) for the pipes with nominal diameter above 90 mm.

Note 1 - Nominal wall thicknesses comply with ISO 4065.

Not 2 - S20 ve S16 için PN 6 değerleri, tercih edilen sayı olarak 6,3 alınarak hesaplanır

## PVC Pressurized Water Pipe Gasket








Dia. (mm)	Code	Packing Type	(m)
63	1710906300192	Parcel	600
75	1710907500292	Parcel	350
90	1710909000392	Parcel	250
110	1710911000492	Parcel	200
125	1710912500592	Parcel	200
140	1710914000692	Parcel	175
160	1710916000792	Bag	150
200	1710920000892	Parcel	250
225	1710922500992	Bag	75
250	1710925001092	Parcel	100
280	1710928001192	Parcel	50
315	1710931501292	Parcel	40
355	1710935501392	Parcel	30
450	1710940001492	Parcel	25
450	1710945001692	Parcel	10
500	1710950001592	Parcel	15

Product Range

# TP fittings and valves



	PVC-U Fittings	4
	PVC-U Ball valves	37
	PVC-U Check valves	50
	PVC-U Butterfly valves	56
	PVC-U British standard Inch range	63
	Index	75

# PVC-U Fittings

## Applications

TP (formerly known as Tecno Plastic) is a dedicated brand of PVC fittings and valves for water piping systems. Each TP product is designed to meet the demands of the customers in specific application areas such as distribution, treatment and sewage water, public and private swimming pools, thermal pools and spas, aquariums and aquaculture, irrigation and fountains.

## Range

TP full range of fittings is available in following ranges: metric for solvent cement from 16 mm to 225 mm, BSP threaded from 3/8" to 6", adaptor set from 16x3/8" to 160x6".

## MECHANICAL PROPERTIES

Max working pressure in Bar

Series	Dimensions	PN
Solvent jointing	from d 16 to d 200	16
	from d 225 to d 315	10
Threaded	from 3/8" to 6"	16
Adaptor range	from D 16 to D 160	16

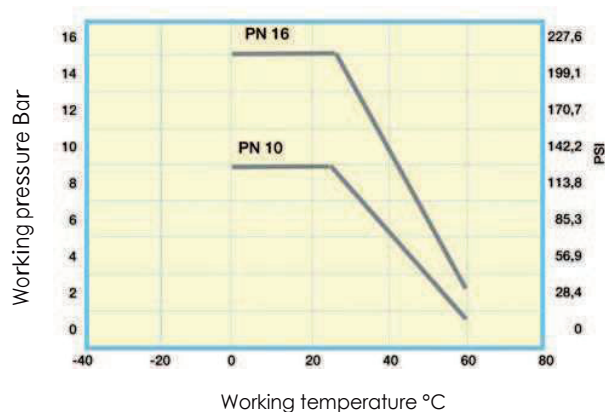
## Sanitary regulations

Our fittings, as well as applied raw material, are suitable for drinkable water and foodstuff fluids in accordance either to the Italian National Authorities laws (D.M.174, 6th april 2004), or other international organizations.

## Materials

The PVC-U compound used by TP is stabilised unplasticized polyvinyl chloride. Material chemical resistances according to ISO/TR 10358.

## PRESSURE-TEMPERATURE RELATIONSHIP ACCORDING TO DIN 3441 BLATT 1 AND EN 145£/3/5



## Standards

The raw material applied for TP products is in compliance with international standards mentioned in the table "PHYSICAL PROPERTIES OF PVC-U".

TP fittings are in compliance with the main international standards too, like ISO EN 1452-3, NF & KIW A, so that they can be combined with pipes according to the main international standards.

## SAFETY FACTORS AT £0°C FOR PN 16 FITTINGS

Working pressure	Hours		Corresponding to 50 years life
	1	1000	
10 Bar	6,7	5,1	4,0
16 Bar DN≤160	4,2	3,2	2,5
16 Bar DN>160	3,36	2,56	2

## Gaskets

Standard Gaskets for unions and stubs are in EPDM (ethylene - polypropylene rubber).

## PHYSICAL PROPERTIES OF PVC-U

Characteristics	Standard	Units	PVC
Density	ISO 1183	kg/dm <sup>3</sup>	1,40
Elongation	ISO R527	%	154
Modulus of elasticity	ISO R527	MPa	2.600
Resistance to traction	ISO R527	MPa	40
Tensile strength	ISO R527	MPa	44
Vicat softening point with 5Kgs	ISO 306	°C	> 76
Thermal conductivity 23°C	ASTM C 177	$\frac{w}{mk}$	0,13±0,19
Coefficient of linear expansion	ASTM D696 UNI 6061	$\frac{mm}{mm °C}$	5÷8x10 <sup>-5</sup>
Water absorption	UNI 7449-75	mg/cm <sup>2</sup>	< 0,1
Meets fire regulations	UL94		V-O
Ash content	UNI 7449-75	%	< 3
Colour			9735

# PVC-U Fittings

## PIPE-FITTINGS TOLLERANCES FOR SOLVENT

### JOINTING ACCORDING TO:

Fittings: ISO 727 - EN 1452/2/3 - DIN 8063 - KIWA 54  
NFT54-028

Pipes: ISO 161 - EN 1452/2 - DIN 8062 - KIWA 49  
NFT54-016

Nominal DN	D	male fittings outside diam.		female fittings inside diam.	
		Min.	Max.	Min.	Max.
10	16	16	16,20	16,10	16,30
15	20	20	20,20	20,10	20,30
20	25	25	25,20	25,10	25,30
25	32	32	32,20	32,10	32,30
32	40	40	40,20	40,10	40,30
40	50	50	50,20	50,10	50,30
50	63	63	63,20	63,10	63,30
65	75	75	75,30	75,10	75,30
80	90	90	90,30	90,10	90,30
100	110	110	110,30	110,10	110,40
110	125	125	125,30	125,10	125,40
125	140	140	140,40	140,20	140,50
150	160	160	160,40	160,20	160,50
200	200	200	200,50	200,20	200,60
200	225	225	225,50	225,30	225,70

## Assembly instructions

### METRIC SET FOR SOLVENT CEMENT JOINTINGS

TP fittings in rigid PVC-U of metric range can be glued to each other and with pipes of same material provided that the pipe dimension and tolerances are in accordance with the mentioned standard. A strong dense-type glue is recommended, especially for glueing large diameters, where the clearance may be high due to the ovalization effect; such clearance, anyhow, in order to guarantee a perfect seal, should never exceed 0,6 mm with a dense type glue and 0,3 mm with a fluid-type glue.

In order to obtain a perfect gluing it is recommended that the glue manufacturer's instructions be strictly followed. These instructions can be summarized as follows:

- remove all traces of grease, oil or simply dust from both the pipe (properly cut at 90° and beveled at the top) and the fitting by means of a clean cloth soaked in diluent;
- apply, by a suitable brush, a uniform layer of glue, both to the fitting and to the pipe, and cover the entire surface to be glued;
- immediately (in 1 to 2 minutes) insert the part to be glued in the female fitting;
- it is recommended that all glue in excess, which flows out of the coupling, to be quickly removed.

It is also recommended that freshly glued parts should not be submitted to mechanical stresses.

The glue manufacturer's instructions concerning how long to wait before handling, sticking and pressure testing the system should be carefully followed.

Generally speaking, none of these operations should take place in the 24 hours following the gluing.

## DIMENSIONS OF THREAD ACCORDING TO:

UNI ISO 7-1 - BS 21 - DIN 2999  
(parallel threaded sockets)

Nominal diameter G	Outside thread diameter	Pitch	Thread depth	Thread assembling length	
		n° of threads/1"			mm
3/8"	16,66	19	1,337	0,856	11,4
1/2"	20,95	14	1,814	1,162	15,0
3/4"	26,44	14	1,814	1,162	16,3
1"	33,25	11	2,309	1,479	19,1
1 1/4"	41,91	11	2,309	1,479	21,4
1 1/2"	47,80	11	2,309	1,479	21,4
2"	59,61	11	2,309	1,479	25,7
2 1/4"	65,71	11	2,309	1,479	-
2 1/2"	75,18	11	2,309	1,479	30,2
2 3/4"	81,53	11	2,309	1,479	-
3"	87,88	11	2,309	1,479	33,3
4"	113,03	11	2,309	1,479	39,3
5"	138,43	11	2,309	1,479	43,6
6"	163,83	11	2,309	1,479	43,6

### THREADED SERIES

TP fittings in rigid PVC-U of the threaded series or of the adaptor series can be screwed to each other or to pipe and other threaded parts in other materials in accordance with the rules given.

In order to obtain easy screwing and perfect sealing, the use of high quality PTFE tape is recommended in quantity sufficient to avoid clearance without causing too tight shutting.

The use of hemp, tow and lint, usually employed for metal fittings, should be avoided.

Such materials, contrary to what happens with PTFE, are not rejected by the coupling even when used in excess, making the female fitting expand in such a way as to cause breakages both during the assembly stage and later, during operation.

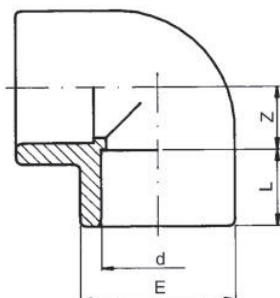
The information set forth are purely indicative, we therefore recommend to comply to laws and regulations relating to the various countries (ex: UNI 11242 Jointing by cementing pipes, fittings and valves PVC-U).



# PVC-U fittings solvent cement jointing

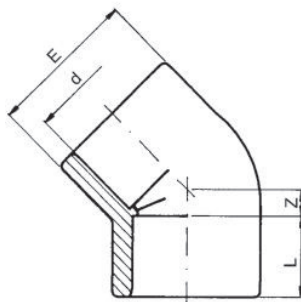
## Metric range

### Elbow 90° PVC-U metric



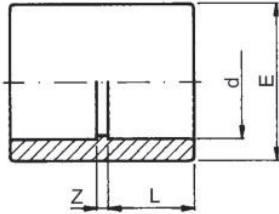
d (mm)	d (inch)	PN (bar)	Code	PF	SP	GP	Weight (kg)	L (mm)	Z (mm)	E (mm)
16		16	RV0G0I160	2 01 950 010	10	320	0.010	14	9	22
20		16	RV0G0I200	2 01 950 010	10	160	0.015	16	11	26
25		16	RV0G0I250	2 01 950 010	10	160	0.025	19	14	32
32		16	RV0G0I320	2 01 950 010	10	80	0.040	22	17	40
40		16	RV0G0I400	2 01 950 010	65	0	0.095	26	21	51
50		16	RV0G0I500	2 01 950 010	80	0	0.120	31	26	61
63		16	RV0G0I630	2 01 950 010	40	0	0.206	38	33	75
75	2 ½	16	RV0G0I750	2 01 950 010	50	0	0.386	44	39	89
90		16	RV0G0I900	2 01 950 010	30	0	0.603	51	47	106
110		16	RV0G0I910	2 01 950 010	17	0	1.078	61	57	129
125		16	RV0G0I920	2 01 950 010	12	0	1.390	69	66	145
140	5	16	RV0G0I930	2 01 950 010	8	0	2.050	76	72	163
160		16	RV0G0I940	2 01 950 010	5	0	3.105	86	82	190
200		16	RV0G0I960	2 01 950 010	28	0	4.800	106	102	228
225		10	RV0G0I970	2 01 950 010	18	0	6.600	119	115	255
250		10	RV0G0I980	2 01 950 013	10	0	12.100	131	188	286
315		10	RV0G0I991	2 01 950 010	5	0	23.500	164	239	358

### Elbow 45° PVC-U metric



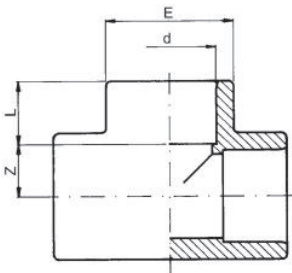
d (inch)	d (mm)	PN (bar)	Code	PF	SP	GP	Weight (kg)	Z (mm)	E (mm)	L (mm)
	16	16	RV0GYI160	2 01 950 010	10	400	0.010	5	23	14
	20	16	RV0GYI200	2 01 950 010	10	300	0.017	5	28	16
	25	16	RV0GYI250	2 01 950 010	10	200	0.029	6	34	19
	32	16	RV0GYI320	2 01 950 010	10	100	0.047	8	42	22
	40	16	RV0GYI400	2 01 950 010	80	0	0.076	10	51	26
	50	16	RV0GYI500	2 01 950 010	100	0	0.110	12	61	31
	63	16	RV0GYI630	2 01 950 010	50	0	0.180	14	75	38
2 ½	75	16	RV0GYI750	2 01 950 010	65	0	0.308	17	89	44
	90	16	RV0GYI900	2 01 950 010	40	0	0.477	20	106	51
	110	16	RV0GYI910	2 01 950 010	22	0	0.842	24	129	61
	125	16	RV0GYI920	2 01 950 010	14	0	1.065	27	145	69
5	140	16	RV0GYI930	2 01 950 010	8	0	1.600	31	163	76
	160	16	RV0GYI940	2 01 950 010	6	0	2.240	35	185	86
	200	16	RV0GYI960	2 01 950 010	30	0	3.780	43	228	106
	225	10	RV0GYI970	2 01 950 010	24	0	5.755	49	255	119
	250	10	RV0GYI980	2 01 950 013	1	0	7.680	58	287	131
	315	10	RV0GYI991	2 01 950 013	8	0	14.700	66	360	164

### Double socket PVC-U metric



d (mm)	d (inch)	PN (bar)	Code	PF	SP	GP	Weight (kg)	Z (mm)	L (mm)	E (mm)
16		16	RV0MAI160	2 01 950 010	10	500	0.009	3	14	22
20		16	RV0MAI200	2 01 950 010	10	300	0.010	3	16	26
25		16	RV0MAI250	2 01 950 010	10	200	0.016	3	19	32
32		16	RV0MAI320	2 01 950 010	10	130	0.026	3	22	40
40		16	RV0MAI400	2 01 950 010	100	0	0.043	3	26	48
50		16	RV0MAI500	2 01 950 010	60	0	0.075	3	31	60
63		16	RV0MAI630	2 01 950 010	70	0	0.121	3	38	74
75	2 ½	16	RV0MAI750	2 01 950 010	48	0	0.226	4	44	89
90		16	RV0MAI900	2 01 950 010	50	0	0.361	5	51	106
110		16	RV0MAI910	2 01 950 010	36	0	0.625	6	61	129
125		16	RV0MAI920	2 01 950 010	24	0	0.840	7	69	145
140	5	16	RV0MAI930	2 01 950 010	14	0	1.100	8	76	162
160		16	RV0MAI940	2 01 950 010	9	0	1.400	8	86	184
200		16	RV0MAI960	2 01 950 010	4	0	2.560	10	106	227
225		10	RV0MAI970	2 01 950 010	2	0	3.540	10	119	252
250		10	RV0MAI980	2 01 950 013	22	0	5.250	10	131	287
315		10	RV0MAI991	2 01 950 013	12	0	10.000	12	164	355

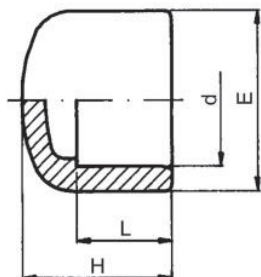
### Tee 90° PVC-U metric



d (mm)	d (inch)	PN (bar)	Code	PF	SP	GP	Weight (kg)	L (mm)	E (mm)	Z (mm)
16		16	RV0TII160	2 01 950 010	10	300	0.017	14	22	9
20		16	RV0TII200	2 01 950 010	10	200	0.029	16	26	11
25		16	RV0TII250	2 01 950 010	10	100	0.032	19	32	14
32		16	RV0TII320	2 01 950 010	10	130	0.055	22	40	17
40		16	RV0TII400	2 01 950 010	45	0	0.127	26	51	21
50		16	RV0TII500	2 01 950 010	50	0	0.185	31	61	26
63		16	RV0TII630	2 01 950 010	25	0	0.315	38	75	33
75	2 ½	16	RV0TII750	2 01 950 010	35	0	0.523	44	89	39
90		16	RV0TII900	2 01 950 010	20	0	0.830	51	106	47
110		16	RV0TII910	2 01 950 010	14	0	1.430	61	129	57
125		16	RV0TII920	2 01 950 010	8	0	1.960	69	148	66
140	5	16	RV0TII930	2 01 950 010	6	0	2.650	76	163	72
160		16	RV0TII940	2 01 950 010	4	0	4.350	86	190	82
200		16	RV0TII960	2 01 950 010	20	0	6.540	106	228	102
225		10	RV0TII970	2 01 950 010	15	0	8.630	119	255	115
250		10	RV0TII980	2 01 950 013	10	0	12.600	131	286	128
315		10	RV0TII991	2 01 950 013	4	0	23.400	161	360	162

PF 2 01 950 010

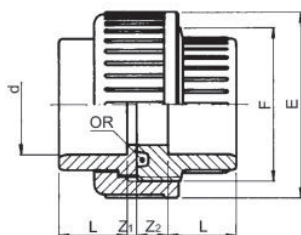
Cap PVC-U metric



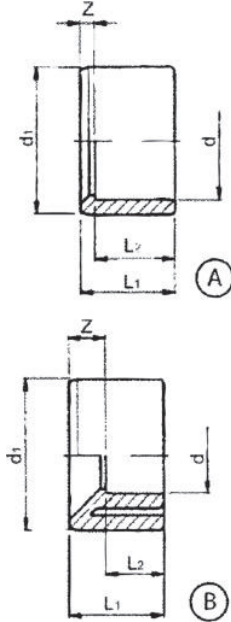
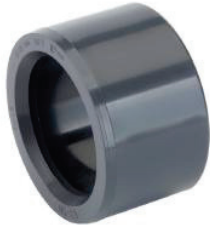
d (mm)	d (inch)	PN (bar)	Code	SP	GP	Weight (kg)	H (mm)	E (mm)	L (mm)
16		16	<b>RV0CAI160</b>	10	600	0.005	22	22	14
20		16	<b>RV0CAI200</b>	10	500	0.008	26	26	16
25		16	<b>RV0CAI250</b>	10	400	0.013	30	32	19
32		16	<b>RV0CAI320</b>	10	200	0.022	33	40	22
40		16	<b>RV0CAI400</b>	100	0	0.045	41	51	26
50		16	<b>RV0CAI500</b>	80	0	0.065	46	61	31
63		16	<b>RV0CAI630</b>	50	0	0.110	55	75	38
75	2 ½	16	<b>RV0CAI750</b>	25	0	0.187	64	89	44
90		16	<b>RV0CAI900</b>	20	0	0.301	73	106	51
110		16	<b>RV0CAI910</b>	25	0	0.510	87	129	61
125		16	<b>RV0CAI920</b>	36	0	0.665	98	145	69
140	5	16	<b>RV0CAI930</b>	30	0	0.915	108	162	76
160		16	<b>RV0CAI940</b>	18	0	1.195	123	182	86
200		16	<b>RV0CAI960</b>	8	0	2.115	149	228	106
225		10	<b>RV0CAI970</b>	6	0	2.835	165	256	119

PF 2 01 950 010

Union with o-ring PVC-U metric



d (mm)	d (inch)	PN (bar)	EPDM Code	SP	GP	Weight (kg)	Z1 (mm)	E (mm)	Z2 (mm)	L (mm)	F (inch)
16		16	<b>RV0BOI160</b>	10	300	0.025	3	34	10	14	¾
20		16	<b>RV0BOI200</b>	10	200	0.042	3	42	10	16	1
25		16	<b>RV0BOI250</b>	10	100	0.066	3	52	10	19	1 ¼
32		16	<b>RV0BOI320</b>	10	60	0.093	3	59	10	22	1 ½
40		16	<b>RV0BOI400</b>	100	0	0.160	3	73	12	26	2
50		16	<b>RV0BOI500</b>	60	0	0.195	3	82	14	31	2 ¼
63		16	<b>RV0BOI630</b>	36	0	0.355	3	100	18	38	2 ¾
75	2 ½	16	<b>RV0BOI750</b>	10	0	0.575	3	119	18	44	3 ½
90		16	<b>RV0BOI900</b>	15	0	0.765	5	134	18	51	4
110		16	<b>RV0BOI910</b>	18	0	1.285	5	163	18	61	5

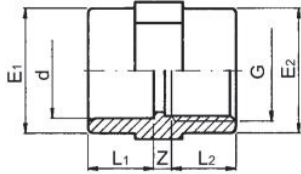


### Reducing bush PVC-U metric

	d1-d (mm)	PN (bar)	Code	PF	SP	GP	Weight (kg)	L2 (mm)	L1 (mm)	Z (mm)
A	20-16	16	<b>RVORCI20A</b>	2 01 950 010	10	800	0.003	14	16	2
B	25-16	16	<b>RVORCI25A</b>	2 01 950 010	10	600	0.008	14	19	5
A	25-20	16	<b>RVORCI25B</b>	2 01 950 010	10	600	0.005	16	19	3
B	32-16	16	<b>RVORCI32A</b>	2 01 950 010	10	400	0.015	14	22	8
B	32-20	16	<b>RVORCI32B</b>	2 01 950 010	10	400	0.015	16	22	6
A	32-25	16	<b>RVORCI32C</b>	2 01 950 010	10	400	0.010	19	22	3
B	40-20	16	<b>RVORCI40B</b>	2 01 950 010	10	200	0.025	16	26	10
B	40-25	16	<b>RVORCI40C</b>	2 01 950 010	10	200	0.027	19	26	7
A	40-32	16	<b>RVORCI40D</b>	2 01 950 010	10	200	0.016	22	26	4
B	50-25	16	<b>RVORCI50C</b>	2 01 950 010	180	0	0.045	19	31	12
B	50-32	16	<b>RVORCI50D</b>	2 01 950 010	180	0	0.042	22	31	9
A	50-40	16	<b>RVORCI50E</b>	2 01 950 010	180	0	0.030	26	31	5
B	63-32	16	<b>RVORCI63D</b>	2 01 950 010	100	0	0.083	22	38	16
B	63-40	16	<b>RVORCI63E</b>	2 01 950 010	100	0	0.081	26	38	12
A	63-50	16	<b>RVORCI63F</b>	2 01 950 010	100	0	0.062	31	38	7
B	75-40	16	<b>RVORCI75E</b>	2 01 950 010	60	0	0.120	26	44	18
B	75-50	16	<b>RVORCI75F</b>	2 01 950 010	60	0	0.122	31	44	13
A	75-63	16	<b>RVORCI75G</b>	2 01 950 010	60	0	0.082	38	44	6
B	90-50	16	<b>RVORCI90F</b>	2 01 950 010	30	0	0.210	31	51	20
B	90-63	16	<b>RVORCI90G</b>	2 01 950 010	30	0	0.195	38	51	13
A	90-75	16	<b>RVORCI90H</b>	2 01 950 010	30	0	0.140	44	51	7
B	110-63	16	<b>RVORCI91G</b>	2 01 950 010	20	0	0.365	38	61	23
B	110-75	16	<b>RVORCI91H</b>	2 01 950 010	20	0	0.365	44	61	17
A	110-90	16	<b>RVORCI91I</b>	2 01 950 010	20	0	0.273	51	61	10
B	125-75	16	<b>RVORCI92H</b>	2 01 950 010	30	0	0.412	44	69	25
B	125-90	16	<b>RVORCI92I</b>	2 01 950 010	30	0	0.450	51	69	18
A	125-110	16	<b>RVORCI92L</b>	2 01 950 010	30	0	0.273	61	69	8
B	140-90	16	<b>RVORCI93I</b>	2 01 950 010	22	0	0.550	51	76	25
B	140-110	16	<b>RVORCI93L</b>	2 01 950 010	22	0	0.475	61	76	15
A	140-125	16	<b>RVORCI93M</b>	2 01 950 010	22	0	0.340	69	76	7
B	160-110	16	<b>RVORCI94L</b>	2 01 950 010	13	0	0.795	61	86	25
B	160-125	16	<b>RVORCI94M</b>	2 01 950 010	13	0	0.725	69	86	17
A	160-140	16	<b>RVORCI94N</b>	2 01 950 010	13	0	0.545	76	86	10
A	180-160	16	<b>RVORCI95O</b>	2 01 950 010	20	0	0.710	86	96	10
A	200-160	16	<b>RVORCI96O</b>	2 01 950 010	15	0	1.645	86	106	10
A	200-180	16	<b>RVORCI96P</b>	2 01 950 010	15	0	0.870	96	106	10
B	225-160	10	<b>RVORCI97O</b>	2 01 950 010	9	0	2.300	86	119	33
A	225-200	10	<b>RVORCI97Q</b>	2 01 950 010	9	0	1.360	106	119	13
B	250-160	10	<b>RVORCI98O</b>	2 01 950 013	8	0	3.300	87	134	47
B	250-200	10	<b>RVORCI98Q</b>	2 01 950 013	8	0	2.735	107	134	27
A	250-225	10	<b>RVORCI98R</b>	2 01 950 013	8	0	1.700	120	132	12
B	315-200	10	<b>RVORCI991Q</b>	2 01 950 013	3	0	5.000	107	165	58
B	315-225	10	<b>RVORCI991R</b>	2 01 950 013	3	0	4.500	132	165	33
B	315-250	10	<b>RVORCI991S</b>	2 01 950 013	3	0	4.100	132	165	33

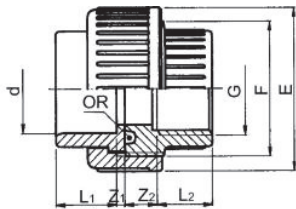
Plain/threaded socket G PVC-U

• (\*) Without octagon



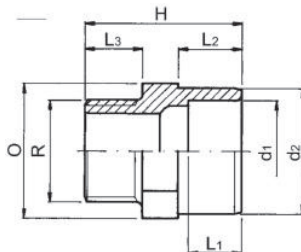
d (mm)	d (inch)	G (inch)	PN (bar)	Code	SP	GP	Weight (kg)	E2 (mm)	E1 (mm)	L1 (mm)	L2 (mm)	Z1 (mm)
16		3/8	16	RV0MAP16A	10	500	0.010	23	23	14	11.4	6
20		1/2	16	RV0MAP20B	10	250	0.017	28	28	16	15.0	6
25		3/4	16	RV0MAP25C	10	200	0.024	34	34	19	16.3	6
32		1	16	RV0MAP32D	10	130	0.042	42	42	22	19.1	6
40		1 1/4	16	RV0MAP40E	100	0	0.060	51	51	26	21.4	4
50		1 1/2	16	RV0MAP50F	60	0	0.087	58	61	31	21.4	7
63		2	16	RV0MAP63G	80	0	0.134	72	75	38	25.7	7
75	2 1/2	2 1/2	16	RV0MAP75H	110	0	0.215	89	89	44	30.2	8
90		3	16	RV0MAP90I	64	0	0.345	103	106	51	33.3	9
110		4	16	RV0MAP91L	35	0	0.550	130	129	61	39.3	10
*	125	5	16	RV0MAP92N	16	0	1.060		160	69	43.6	51
*	140	5	16	RV0MAP93N	9	0	1.120		162	76	43.6	40
*	160	6	16	RV0MAP94O	9	0	1.400		184	86	48.0	46

Plain/threaded union with o-ring G PVC-U



d (mm)	d (inch)	G (inch)	PN (bar)	EPDM Code	SP	GP	Weight (kg)	E (mm)	F (inch)	Z2 (mm)	L1 (mm)	L2 (mm)	Z1 (mm)
16		3/8	16	RV0BOP16A	10	250	0.031	34	3/4	13.6	14	11.4	3
20		1/2	16	RV0BOP20B	10	150	0.042	42	1	11.0	16	15.0	3
25		3/4	16	RV0BOP25C	10	100	0.070	52	1 1/4	12.7	19	16.3	3
32		1	16	RV0BOP32D	10	60	0.094	59	1 1/2	12.9	22	19.1	3
40		1 1/4	16	RV0BOP40E	90	0	0.155	72	2	16.6	26	21.4	3
50		1 1/2	16	RV0BOP50F	60	0	0.237	79	2 1/4	23.6	31	21.4	3
63		2	16	RV0BOP63G	36	0	0.382	96	2 3/4	30.3	38	25.7	3
75	2 1/2	2 1/2	16	RV0BOP75H	20	0	0.625	119	3 1/2	31.8	44	30.2	3
90		3	16	RV0BOP90I	15	0	0.865	134	4	35.7	51	33.3	5
110		4	16	RV0BOP91L	18	0	1.340	163	5	39.7	61	39.3	5

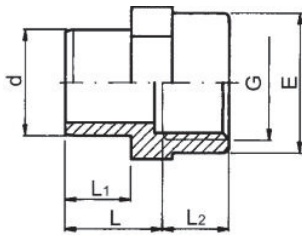
Threaded adaptor R PVC-U 3 diameters



d1-d2 (mm)	R (inch)	PN (bar)	Code	SP	GP	Weight (kg)	O (mm)	L3 (mm)	L1 (mm)	H (mm)	L2 (mm)
12 - 16	3/8	16	RV0AMP12A	10	600	0.008	22	11.4		36	14
16 - 20	3/8	16	RV0AMP16A	10	500	0.009	24	11.4	14	40	16
16 - 20	1/2	16	RV0AMP16B	10	400	0.010	24	15.0	14	43	16
20 - 25	3/8	16	RV0AMP20A	10	300	0.014	30	11.4	16	43	19
20 - 25	1/2	16	RV0AMP20B	10	300	0.014	30	15.0	16	46	19
20 - 25	3/4	16	RV0AMP20C	10	300	0.015	30	16.3	16	47	19
25 - 32	1/2	16	RV0AMP25B	10	200	0.025	36	15.0	19	49	22
25 - 32	3/4	16	RV0AMP25C	10	200	0.026	36	16.3	19	50	22
25 - 32	1	16	RV0AMP25D	10	200	0.029	36	19.1	19	53	22
32 - 40	3/8	16	RV0AMP32C	10	140	0.036	42	16.3	22	54	26
32 - 40	1	16	RV0AMP32D	10	120	0.040	42	19.1	22	57	26
32 - 40	1 1/4	16	RV0AMP32E	10	100	0.049	46	21.4	22	60	26
40 - 50	1	16	RV0AMP40D	90	0	0.070	55	19.1	26	64	31
40 - 50	1 1/4	16	RV0AMP40E	50	0	0.075	55	21.4	26	67	31
40 - 50	1 1/2	16	RV0AMP40F	80	0	0.074	55	21.4	26	67	31
50 - 63	1 1/4	16	RV0AMP50E	50	0	0.115	65	21.4	31	74	38
50 - 63	1 1/2	16	RV0AMP50F	110	0	0.113	65	21.4	31	74	38
50 - 63	2	16	RV0AMP50G	100	0	0.125	65	25.7	31	78	38

table continued on the next page

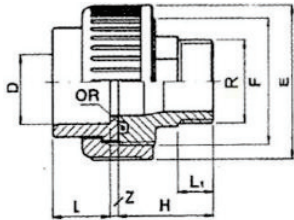
PF 2 01 951 011



d (mm)	d (inch)	G (inch)	PN (bar)	Code	SP	GP	Weight (kg)	L (mm)	L1 (mm)	E (mm)	L2 (mm)
90		3	16	<b>RV0AFP90I</b>	60	0	0.310	65	51	103	33.3
90		4	16	<b>RV0AFP90L</b>	52	0	0.450	65	51	130	39.3
110		3	16	<b>RV0AFP91I</b>	45	0	0.385	76	61	103	33.3
110		4	16	<b>RV0AFP91L</b>	45	0	0.480	76	61	130	39.3

PF 2 01 951 011

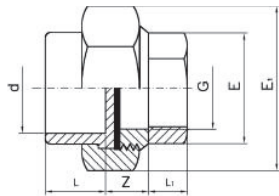
**Plain threaded union R PVC-U**



d (mm)	R (inch)	PN (bar)	Code	SP	GP	Weight (kg)	L1 (mm)	H (mm)	L (mm)	E (mm)	Z (mm)	F (inch)
25	¾	16	<b>RV0BMP25C</b>	10	100	0.078	16.3	44	19	52	3	1 ¼
32	1	16	<b>RV0BMP32D</b>	40	0	0.102	19.1	48	22	59	3	1 ½
40	1 ¼	16	<b>RV0BMP40E</b>	40	0	0.163	21.4	54	26	72	3	2
50	1 ½	16	<b>RV0BMP50F</b>	60	0	0.220	22.0	58	31	79	3	2 ¼
50	2	16	<b>RV0BMP50G</b>	60	0	0.260	26.0	58	31	79	3	2 ¼
63	2	16	<b>RV0BMP63G</b>	36	0	0.375	26.0	66	38	96	3	2 ¾

PF 2 01 950 013

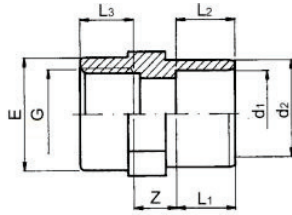
**Union PVC-U/brass threaded G**



d (mm)	G (inch)	PN (bar)	Code	SP	Weight (kg)	E (mm)	L (mm)	L1 (mm)	Z (mm)	E1 (mm)
16	¾	16	<b>RV0BMF16A</b>	170	0.085	20	14	11	10	30
20	½	16	<b>RV0BMF20B</b>	70	0.145	25	16	15	11	38
25	¾	16	<b>RV0BMF25C</b>	50	0.215	32	19	15	14	47
32	1	16	<b>RV0BMF32D</b>	40	0.280	38	22	16	12	55
40	1 ¼	16	<b>RV0BMF40E</b>	25	0.380	48	26	19	13	65
50	1 ½	16	<b>RV0BMF50F</b>	25	0.500	54	31	21	13	72
63	2	16	<b>RV0BMF63G</b>	15	1.200	66	38	25	14	88

PF 2 01 951 011

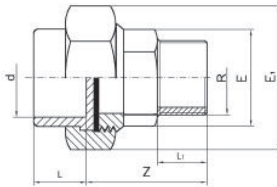
**Adaptor socket Rp PVC-U 3 diameters**



d1-d2 (mm)	G (inch)	PN (bar)	Code	SP	GP	Weight (kg)	L1 (mm)	L3 (mm)	Z (mm)	L2 (mm)	E (mm)
20 - 25	½	16	<b>RV0MFP25B</b>	10	200	0.015	16	15.0	12	19	28
25 - 32	¾	16	<b>RV0MFP32C</b>	10	150	0.027	19	16.3	13	22	34
32 - 40	1	16	<b>RV0MFP40D</b>	130	0	0.050	22	19.1	14	26	42
40 - 50	1 ¼	16	<b>RV0MFP50E</b>	110	0	0.070	26	21.4	16	31	51
50 - 63	1 ½	16	<b>RV0MFP63F</b>	80	0	0.120	31	21.4	18	38	58
63 - 75	2	16	<b>RV0MFP75G</b>	70	0	0.180	38	25.7	18	44	72
75 - 90	2 ½	16	<b>RV0MFP90H</b>	90	0	0.284	44	30.2	21	51	89
90 - 110	3	16	<b>RV0MFP91I</b>	50	0	0.490	51	33.3	25	61	103

PF 2 01 950 013

**Union PVC-U/brass threaded R**



d (mm)	R (inch)	PN (bar)	Code	SP	Weight (kg)	E1 (mm)	Z (mm)	L1 (mm)	L (mm)	E (mm)
16	¾	16	<b>RV0BMM16A</b>	115	0.110	30	35	11	14	20
20	½	16	<b>RV0BMM20B</b>	95	0.165	38	41	12	16	25
25	¾	16	<b>RV0BMM25C</b>	50	0.245	47	45	15	19	32
32	1	16	<b>RV0BMM32D</b>	40	0.325	55	47	19	22	38
40	1 ¼	16	<b>RV0BMM40E</b>	25	0.460	65	55	21	26	48
50	1 ½	16	<b>RV0BMM50F</b>	24	0.610	72	57	21	31	54
63	2	16	<b>RV0BMM63G</b>	15	0.975	88	68	25	38	66

# Accessories

PF 2 01 950 013



## Polypropylene pipe clip

- (\*) Traded items

	d (mm)	Code	SP	GP	Weight (kg)
*	16	<b>APOSPT160</b>	20	500	0.006
*	20	<b>APOSPT200</b>	20	1100	0.008
*	25	<b>APOSPT250</b>	20	1000	0.009
*	32	<b>APOSPT320</b>	20	800	0.013
*	40	<b>APOSPT400</b>	10	250	0.026
*	50	<b>APOSPT500</b>	10	400	0.033
*	63	<b>APOSPT630</b>	10	160	0.047
*	75	<b>APOSPT750</b>	10	150	0.085
*	90	<b>APOSPT900</b>	10	120	0.100
*	110	<b>APOSPT910</b>	10	100	0.110
*	125	<b>APOSPT920</b>	10	50	0.114
*	140	<b>APOSPT930</b>	10	30	0.124
*	160	<b>APOSPT940</b>	10	20	0.137

PF 2 02 962 013



## O-ring

Suitable for unions

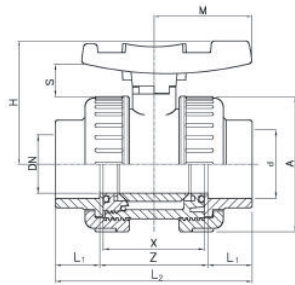
- (\*) Traded items

	d (mm)	EPDM Code	SP
*	16	<b>1ORD03062</b>	10
*	20	<b>1ORD04081</b>	10
*	25	<b>1ORD04112</b>	10
*	32	<b>1ORD04131</b>	10
*	40	<b>1ORD06162</b>	10
*	50	<b>1ORD06187</b>	10
*	63	<b>1ORD06237</b>	10
*	75	<b>1ORD06312</b>	10
*	90	<b>1ORD06362</b>	10
*	110	<b>1ORD06450</b>	10



# PVC-U safeblock water ball valves

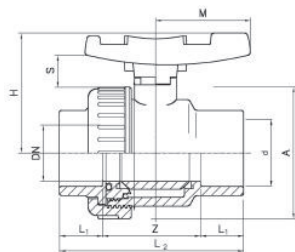
PF 2 02 956 010



## Double union safeblock ISO PVC-U Ball valve with solvent cement sockets

d (mm)	d (inch)	DN (mm)	PN (bar)	EPDM Code	SP	Weight (kg)	L1 (mm)	H (mm)	L2 (mm)	A (mm)	S (mm)	Z (mm)	X (mm)	M (mm)
16		10	16	VSA221160	50	0.130	14	53	76	50	19	48	42	40
20		15	16	VSA221200	50	0.130	16	53	80	50	19	48	41	40
25		20	16	VSA221250	45	0.205	19	60	91	59	19	53	48	45
32		25	16	VSA221320	50	0.295	22	67	102	68	21	58	54	51
40		32	16	VSA221400	36	0.435	26	79	120	80	25	68	62	59
50		40	16	VSA221500	24	0.680	31	90	140	94	27	78	72	70
63		50	16	VSA221630	13	1.160	38	107	169	115	29	93	86	84
75	2 1/2	65	10	VSA221750	8	2.200	44	129	206	145	32	118	110	103
90		80	10	VSA221900	4	3.310	51	143	242	168	36	140	128	120
110		100	10	VSA221910	2	5.925	61	169	282	210	43	160	150	141

PF 2 02 956 010



## Single union safeblock ISO PVC-U Ball valve with solvent cement sockets

d (mm)	d (inch)	DN (mm)	PN (bar)	EPDM Code	SP	Weight (kg)	L1 (mm)	M (mm)	A (mm)	S (mm)	H (mm)	L2 (mm)	Z (mm)
16		10	16	VSA181160	180	0.100	14	40	50	19	53	76	48
20		15	16	VSA181200	180	0.100	16	40	50	19	53	80	48
25		20	16	VSA181250	120	0.160	19	45	59	19	60	91	53
32		25	16	VSA181320	75	0.230	22	51	68	21	67	102	58
40		32	16	VSA181400	45	0.340	26	59	80	25	79	120	68
50		40	16	VSA181500	30	0.525	31	70	94	28	90	140	78
63		50	16	VSA181630	16	0.890	38	84	115	29	107	169	93
75	2 1/2	65	10	VSA181750	8	1.640	44	103	145	32	129	206	118
90		80	10	VSA181900	5	2.450	51	120	168	36	143	242	140
110		100	10	VSA181910	2	4.100	61	141	210	43	169	282	160