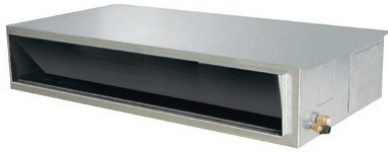


WFA039RGOA / WFA055RGOA
WFA066RGOA



FCU LOW ESP DUCT

INDOOR			WFA039RGOA	WFA055RGOA	WFA066RGOA
Power Supply	Ø, V, Hz		1, 220-230-240, 50	1, 220-230-240, 50	1, 220-230-240, 50
Running Current by Voltage	A		0.26-0.37-0.37	0.36-0.44-0.44	0.70-0.71-0.71
Capacity	Cooling	Condition A	3.9 (3,353)	5.0 (4,299)	6.6 (5,675)
		Condition B	3.3 (2,837)	4.2 (3,611)	5.5 (4,729)
		Condition C	3.5 (3,009)	4.4 (3,783)	5.9 (5,073)
		Condition D	2.0 (1,721)	2.5 (2,150)	3.3 (2,837)
	Heating	Condition A	4.2 (3,611)	5.3 (4,557)	6.6 (5,675)
		Condition B	5.0 (4,299)	6.4 (5,503)	8.0 (6,879)
Water Flow Rate	Cooling	Condition A	13.3	17.0	21.7
		Condition B	13.3	17.0	21.7
		Condition C	13.3	17.0	21.7
		Condition D	9.0	11.5	14.7
	Heating	Condition A	13.3	17.0	21.7
		Condition B	13.3	17.0	21.7
Head Loss	Cooling	Condition A	21.7	39.0	53.9
		Condition B	21.7	39.0	53.9
		Condition C	21.7	39.0	53.9
		Condition D	5.7	27.2	37.6
	Heating	Condition A	30.3	48.3	71.7
		Condition B	30.3	48.3	71.7
Power Input	Nominal	W	29	44	81
Running Current	Nominal	A	0.37	0.44	0.71
Fan	Type	-	Sirocco Fan	Sirocco Fan	Sirocco Fan
	Air Flow Rate (H / M / L)	m ³ / min	10.7 / 9.3 / 7.2	14.4 / 10.7 / 9.3	20.1 / 17.3 / 14.4
	External Static Pressure (Standard mode)	mmAq	0	0	0
	External Static Pressure (High mode)	mmAq	0	0	0
Fan Motor	Type	-	BLDC	BLDC	BLDC
	Drive	-	CW	CW	CW
	Output	W x No.	19 x 2	19 x 2	19 x 2
	FLA (Full Load Ampere)	A	0.37	0.44	0.71
Dimensions	Net (W x H x D)	mm	1,100 x 190 x 700	1,100 x 190 x 700	1,100 x 190 x 700
	Shipping (W x H x D)	mm	1,242 x 235 x 766	1,242 x 235 x 766	1,242 x 235 x 766
Weight	Net	kg	26.2	26.2	26.2
	Shipping	kg	30.7	30.7	30.7
Air Filter	Type	-	Pre Filter	Pre Filter	Pre Filter
Temperature Control	-		Microprocessor; Thermostat for cooling and heating		
Sound Absorbing / Thermal Insulation Material	-		Foamed polystrene	Foamed polystrene	Foamed polystrene
Protection Device	-		Fuse	Fuse	Fuse
Water Connecting Pipes	Inlet	-	BSPF G 3/4" (male)	BSPF G 3/4" (male)	BSPF G 3/4" (male)
	Outlet	-	BSPF G 3/4" (male)	BSPF G 3/4" (male)	BSPF G 3/4" (male)
Sound Pressure Level	Cooling (H / M / L)	dB(A)	28 / 27 / 26	31 / 28 / 26	38 / 34 / 31
	Heating (H / M / L)	dB(A)	28 / 27 / 26	31 / 28 / 26	38 / 34 / 31
Sound Power Level	Cooling (H / M / L)	dB(A)	43 / 41 / 40	47 / 42 / 41	55 / 52 / 48
	Heating (H / M / L)	dB(A)	43 / 41 / 40	47 / 42 / 41	55 / 52 / 48
Connecting Cable	Communication Cable (VCTF-SB)	mm ² x cores	1.0 - 1.5	1.0 - 1.5	1.0 - 1.5